



# Full Circle

THE INDEPENDENT MAGAZINE FOR THE UBUNTU LINUX COMMUNITY

ISSUE #56 - December 2011

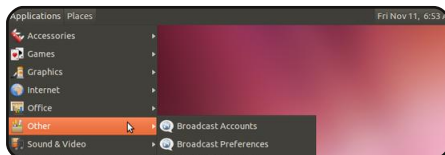


**COMPETITION:**  
WIN 100GB OF  
SPIDEROAK SPACE!



**BIGGER ISSUE WITH MORE GAMES!**  
MULTIWINIA, BOBBY, AND MORE!

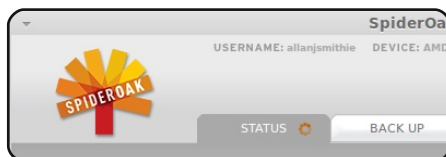
## HowTo



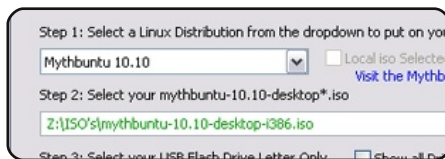
Make 11.10 Look 'Classic' p.08



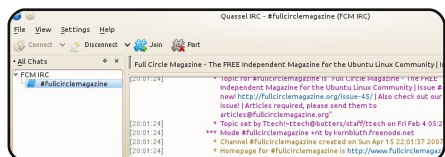
LibreOffice Pt10 p.13



Backup Strategy Pt4 p.15



Persistent USB Stick p.18



Connect To IRC p.21



# Full Circle

THE INDEPENDENT MAGAZINE FOR THE UBUNTU LINUX COMMUNITY

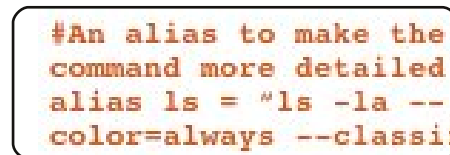


Linux News p.04

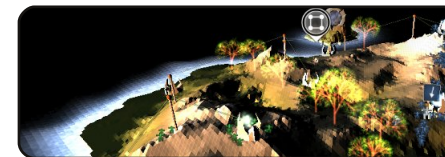


My Desktop p.53

## Columns



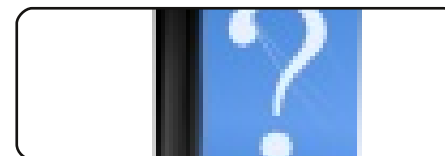
Command & Conquer p.05



Ubuntu Games p.50



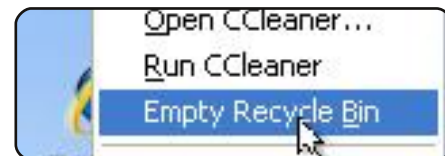
Linux Labs p.27



Q&A p.47

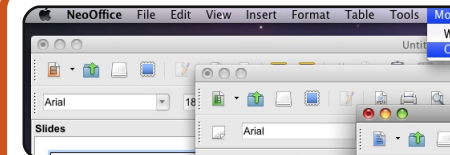


Ubuntu Women p.54

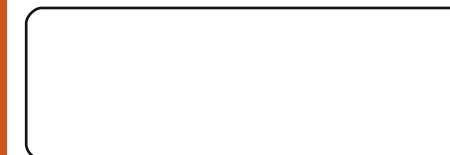


Closing Windows p.30

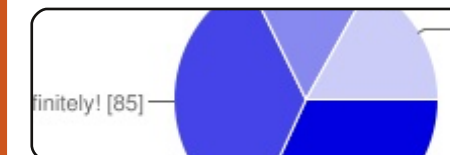
## Opinions



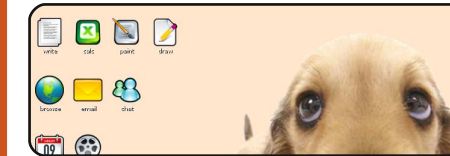
My Story p.34



My Opinion p.37



I Think... p.38



Review p.41



Letters p.43



The articles contained in this magazine are released under the Creative Commons Attribution-Share Alike 3.0 Unported license. This means you can adapt, copy, distribute and transmit the articles but only under the following conditions: You must attribute the work to the original author in some way (at least a name, email or URL) and to this magazine by name ('full circle magazine') and the URL [www.fullcirclemagazine.org](http://www.fullcirclemagazine.org) (but not attribute the article(s) in any way that suggests that they endorse you or your use of the work). If you alter, transform, or build upon this work, you must distribute the resulting work under the same, similar or a compatible license.

**Full Circle magazine is entirely independent of Canonical, the sponsor of the Ubuntu projects, and the views and opinions in the magazine should in no way be assumed to have Canonical endorsement.**



## Welcome to the last issue of Full Circle.

**T**he last of 2011 that is. It's another bumper issue this month with a little bit of everything: make a persistent USB stick, create a backup with SpiderOak, LibreOffice Calc, making 11.10 look 'classic', and how to connect to IRC. Not only that but Ubuntu Games has grown to two articles each month, so please welcome Riku and Jennifer as our regular gamers. Charles has taken over the Linux Labs column and, this month, shows you how to install XBMC (Xbox Media Centre). I've also added a few other new bits to this issue, but I'll let you find them yourself.

Robin 'Mr. Podcast' Catling makes an appearance with his review of Puppy Linux. Now based on Lucid Lynx, Puppy is even more relevant to us than in previous incarnations, and if you haven't tried it yet on your old hardware I definitely recommend it. It's small, lightning fast, and fully equipped for that aging hardware you have lying around gathering dust.

The majority of people voted that they would attend, or would be interested in attending, an FCM IRC meeting each month. I'll try and set something up for January/February 2012 if possible. I'll announce a date either in FCM#57 or online via our website mailing list, Facebook, and Google+, so stay tuned!

Don't forget to check out the questionnaire for next month. Fill it in and you could be in with a chance to win 100GB of cloud space courtesy of SpiderOak. We'll also pick winners from Twitter and Facebook. See the 'I Think' results pages for more info.

***All the best, keep in touch, and I'll see you all in 2012!***

*Ronnie*

[ronnie@fullcirclemagazine.org](mailto:ronnie@fullcirclemagazine.org)

This magazine was created using :



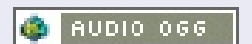
## Full Circle Podcast

Released monthly, each episode covers all the latest Ubuntu news, opinions, reviews, interviews and listener feedback. The Side-Pod is a new addition, it's an extra (irregular) short-form podcast which is intended to be a branch of the main podcast. It's somewhere to put all the general technology and non-Ubuntu stuff that doesn't fit in the main podcast.

### **Hosts:**

Robin Catling  
Ed Hewitt  
Dave Wilkins

<http://fullcirclemagazine.org>







## Ubuntu 11.10 To Power New PC Line



US PC maker CTL [has] announced a new line of Ubuntu-powered computers, beginning with a notebook called the MB40U.

### A Dramatic Increase in Speed

Equipped with up to 8GB of memory, a second-generation Intel Core i3, i5, or i7 processor, DDR3 memory, Bluetooth, and multimedia buttons, the 14.1-inch MB40U weighs just 4.85 pounds and offers a battery life of up to six hours. Expanded storage space is available through the use of E-SATA.

**Source:** pcworld.com

## Gnome 3 Shell Forked As Cinnamon



So why has Gnome 3 been forked [...] ? [It] comes with a completely new way of using the desktop that not everyone will be comfortable with.

With the release of Linux Mint 12, the Linux Mint developers created extensions for Gnome 3 that brought back a lot of the Gnome 2-style UIs however, there is a limit to how far one can go with just extensions. So the Gnome 3 has been forked, with the intention of creating a new desktop similar to Gnome 2 but built on top of the technically superior Gnome 3.

**Source:** devworks.thinkdigit.com

## Android Drivers To Be Included In Linux 3.3 Kernel



Android drivers are returning to the Linux kernel. Kernel maintainer Greg Kroah-Hartman has retrieved the

Android drivers removed from the staging area of Linux 2.6.33 in the spring of 2010 and put them back into his development branch for version 3.3 of the Linux kernel.

The plan is for a Linux 3.3 kernel to be able to boot on an Android device without further patches – although not all Android patches are being automatically carried over to the main development branch. For example, the WakeLock code, which helps Android devices' batteries last longer but is not necessary for booting, is not included.

**Source:** h-online.com

## Ubuntu Kills Java

Oracle's Sun Java JDK packages are to be removed from the Ubuntu partner repositories and disabled on users systems after Larry Ellison ruled that the retiring the *'Operating System Distributor License for Java, means Canonical no longer have permission to use it.*

The change will affect Ubuntu 10.04, 10.10 and 11.04 users only. Those who have 'sun-java-6' package installed on their system will see it removed via a future software update.

**Source:** fudzilla.com

## FC Notifier Update

The **Full Circle Notifier** is still at 1.0.2, but the PPA has been updated for Oneric. FCN is a small application that sits in your system tray and will announce issue/podcast releases, and can be set to download them too! **For more info, see the FCN Google Group:** <http://goo.gl/4Ob4>





Due to the large interest presented in this topic by a reader, I've decided to write another one or two articles on Vim (including this one). This month I'll be focusing on a tangible example (file can be found here:

<http://pastebin.com/EqrfBFhF>). I'll cover using visual block mode, some tricks for commenting large numbers of lines, a couple of tricks for using the mouse, and copying/pasting to/from external programs from/to Vim. If you're familiar with all of these topics, you can safely skip this article.

Before we begin, I will briefly explain what an abundant number is, so that everyone can roughly follow the script. An abundant number is a number for which the sum of all factors (a factor is a number which divides a value without a remainder) is greater than the number itself. Example: The factors of 12 are: 1,2,3,4,6; the sum of the factors: 1+2+3+4+6=16; 16>12. What the script does is simply calculate which numbers (from a supplied range of numbers)

are abundant, and which are not. The function is part of my solution to an Euler Project problem.

In order to follow the article, I'd highly recommend opening a copy of the file from Pastebin in Vim (or GVim) so you can work along.

## Area 1 (Commenting)

For those of you who are programmers, you'll be familiar with the concept of commenting out all code besides a small segment you want to test, when things aren't working. My approach to doing this is to use Visual Block Mode. The steps are as follows (from the beginning of the first line you want to comment):

```
<ctrl>+[v]; [j];  
<shift>+[i], [#]; [Esc]
```

The first step enters Visual Block mode, the j key acts as a down arrow key, and <shift>+[i] enters insert mode for all selected lines. After these steps, you then hit the key for the comment symbol (in Python's case it's the octothorpe, a.k.a. hash symbol). For uncommenting, check Area 2 for Deleting in Visual Block Mode.

The reader who contacted me offered the following script to do the same:

```
" COMMENTING OUT A #  
CHARACTER IN BASH SCRIPTS  
function! AddDelBashComment()
```

```
let char=getline('.')[0]  
if char == "#"  
    s/^#//g  
else  
    s/^#/g  
endif  
endfunction  
vmap <silent> # :call  
AddDelBashComment()<CR>
```

This script has to be added to your .vimrc. Once it has been added, you can call it in the following way (same process for commenting and uncommenting):

```
<ctrl>+[v]//[v]//[V]; [j];  
[#]
```

As you can see, the only thing you save by doing this is entering and exiting insert mode (and possibly having to press the control

Format	Meaning
<key>	Modifier key (ctrl, alt, shift, etc.) you need to press.
[key]	Key on the keyboard you need to press. If the key is capitalized, it is akin to me writing <shift>+[key] where key is the lowercase letter.
+	Combination of key (i.e. <ctrl>+[v] means press both the control and v keys). If I mean the + key, I'll write [+].
//	Delimits alternative key presses

key). I've included this script for the sake of those for whom every keystroke counts. You will need to adjust the substitute lines for each comment character you frequently use. For SQL you would replace if char == "#" with if char == "-" and s/^#//g with s/^--//g (same for the other substitution command). You must also replace the octothorpe in the vmap line, otherwise you'll be using the same key for multiple functions.

## Area 2 (Visual Block Mode)

Since we covered inserting in Visual Block Mode in Area 1, I will not repeat it in this area.

Deleting in Visual Block Mode:

```
<ctrl>+[v];  
[j]//[h]//[l]//[k];  
[d]//[x]//[x]
```

Which key you use in the second step is entirely dependent upon which direction you want to go (down, left, right, up, respectively). The key in the last step is entirely up to you, they all do the same.

Yanking (copying) text in Visual

Block mode:

Section of a line:

```
[v]; [h]//[j]//[k]//[l]; [y];  
[h]//[j]//[k]//[l];  
<ctrl>+[v];  
[h]//[j]//[k]//[l];  
<shift>+[i]//<shift>+[a];  
<ctrl>+[r]+["]; [Esc]
```

<shift>+[i] inserts at the start of the line/selection, and <shift>+[a] appends to the end of the line/selection.

Copying and pasting an entire line in multiple lines doesn't work with this method (at least not for me). As such, we won't cover it. As a side-note: <ctrl>+[r]+[" works in any insert mode and pastes the contents of the Vim register (the local clipboard).

## Area 3 (Mouse usage)

Just a brief tip: If you want to highlight something in Vim using Visual Block Mode, hold <shift>+<alt> as you select.

## Area 4 (Copying and Pasting to/from external programs)

You may have noticed that the yank and paste methods work only within Vim. To copy text from Vim to another program (firefox, for example), you can select the text with the mouse and use the middle-mouse button paste. If, however, you are at another computer that runs a different operating system (or lacks that function), you can copy text to the system clipboard with:

```
[v]//[V]; [y];  
[h]//[j]//[k]//[l]; ["][+][y]
```

A quick explanation: you select the text you want (first two steps) and then you hit the quotation marks key (on German keyboards it's <shift>+[2]), and then the plus key, and then the y key. Do this one after the other, not all at once. Then to paste in the external program, just use <ctrl>+[v], as per usual.

Pasting:

```
["][+][p]
```

That's it. Press those 3 keys and it will paste the clipboard onto the line you have selected (so you may need to start a new line if that's what you want).

**To copy text from Vim to another program [...] select the text with the mouse and use the middle-mouse button paste.**

You can also set the clipboard to autoselect, which should automatically copy to the system clipboard when you highlight something, and automatically paste from the clipboard when you press the middle-mouse button.

## Area 5 (Extra tips)

Syntax Highlighting:

You can enable syntax highlighting in Vim by using:

```
:set syntax=on (in Vim itself)
```

or

```
syntax enable (in your .vimrc)
```

Hide Vim in the terminal:

<ctrl>+[z] will suspend a task

# COMMAND & CONQUER

into the background (tested in Zsh and Bash). Once you've suspended a task, you can re-open it using the command `fg` in the terminal.

In keypresses:

```
<ctrl>+[z]; [f][g][Enter]
```

Encrypt files with Vim:

```
vim -x <file name>
```

This command will prompt you for an encryption key before you view the file (if the file is empty/new, it will then store the password you enter).

Viewing History:

```
[q][:]
```

This will pull up a list of past commands. You can enter the number from the list in order to pull up the command, or enter `:[q]` to quit the list.

Execute system commands from within Vim:

```
[!](command)
```

An example:

```
:w !sudo tee %
```

This will save the file with sudo rights (in case you open a system file and made changes before realizing you had no rights to save the file). Vim will ask you afterwards if it ought to re-load the file, which you'll want to do.

Vimdiff:

Vimdiff is an extended version of Vim where you can open multiple files to compare them.

Usage:

```
vimdiff file1 file2
```

For horizontal split:

```
vimdiff -o file1 file2
```

For more information:

<http://vimdoc.sourceforge.net/htmldoc/diff.html>

Specify that a Tab is 4 spaces (useful for Python users):

```
set tabstop=4
```

Write this into your `.vimrc`, and any time you press the tab key, it will actually insert up to 4 spaces.

This should be more than

enough to keep everyone busy until next month. If you have any questions, comments, or requests, feel free to email me at [lswest34@gmail.com](mailto:lswest34@gmail.com). If you do email me, please be sure to include "C&C" or "FCM" in the subject, so that I don't overlook it.

My `.vimrc` file:

<http://pastebin.com/wv260CJk>

I hope you've found this article to be interesting. I plan to continue along this path next month. If you have any questions, comments, or suggestions, feel free to email me at [lswest34@gmail.com](mailto:lswest34@gmail.com). If you do email me, please include "FCM" or "C&C" (or, as a regular expression: `[fFcC][cC&][mMcC]`) in the subject header.



**Lucas** has learned all he knows from repeatedly breaking his system, then having no other option but to discover how to fix it. You can email Lucas at: [lswest34@gmail.com](mailto:lswest34@gmail.com).



The Ubuntu Podcast covers all the latest news and issues facing Ubuntu Linux users and Free Software fans in general. The show appeals to the newest user and the oldest coder. Our discussions cover the development of Ubuntu but aren't overly technical. We are lucky enough to have some great guests on the show, telling us first hand about the latest exciting developments they are working on, in a way that we can all understand! We also talk about the Ubuntu community and what it gets up to.

The show is presented by members of the UK's Ubuntu Linux community. Because it is covered by the Ubuntu Code of Conduct it is suitable for all.

The show is broadcast live every fortnight on a Tuesday evening (British time) and is available for download the following day.

[podcast.ubuntu-uk.org](http://podcast.ubuntu-uk.org)





# HOW-TO

Written by Erick Lance Brunzell

## Make 11.10 Look 'Classic'

**NOTE:** Don't kernel panic, programmers, Greg will be back with more Python next month.

Before beginning, please understand that I'm no genius, far from it. My focus has been on Classic (with no effects) only because I've never cared for Compiz anyway, and, from what I've read, it seems to be difficult to get it to run in a classic Oneiric DE. So, if you want Compiz this is NOT for you, sorry. However I do hope someone else will be able to expand on this.

I've tested this quite a bit, but only with fresh, fully updated Ubuntu Oneiric installs. Your mileage may vary with installations that have other underlying problems.

**Important warning:** Many of the changes made here can and will break Unity, so I highly recommend first testing this either in a virtual machine or a multi-boot. I personally prefer an actual multi-boot but that's just a matter of choice.

Another safe way to try this would be to create a new user account with administrative rights, that way the configuration files you change will affect only that new account. Then, if you decide to apply the changes to your original user account, the needed PPA's and packages will already be installed, so you'll need to complete only those steps needed to obtain the desired configuration. And then the new user account could be deleted.

This guide is almost totally reliant on copy and pasting commands into gnome-terminal. Why? Quite simply, not all of this can be completed using GUI tools like Ubuntu Tweak or 'gnome-tweak-tool', and installing 'gnome-tweak-tool' results in installing a large number of unneeded packages including 'gnome-shell', and my only concern is getting a "classic w/o effects" desktop environment (DE) running efficiently. Should someone care to use either Ubuntu Tweak or 'gnome-tweak-tool', I have no

problem with that, I just prefer the CLI.

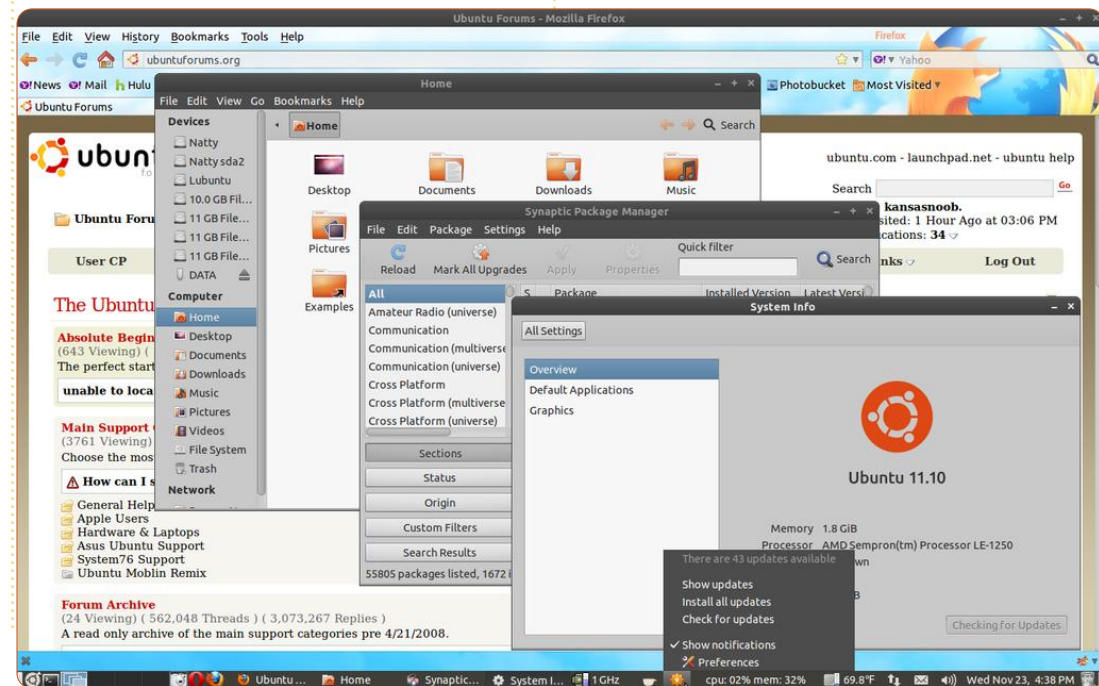
Also, if I didn't include "sudo" in the command, then it's not needed, and in rare instances may result in changed permissions, so please just copy and paste!

Note: If a "step" can be performed using Ubuntu Tweak and/or 'gnome-tweak-tool', I will mention it briefly at the end of that individual step.

First, take a look below at what I ended up with, and then I'll explain how I got there.

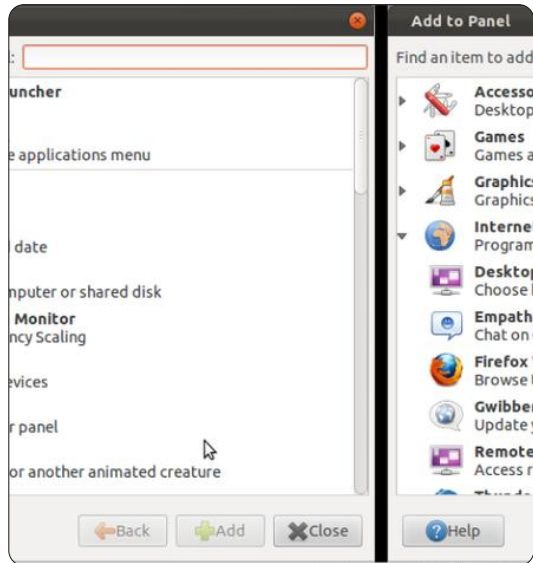
You'll notice that I prefer only one panel at the bottom. I realize some may want two panels, or one at the top only, it's purely a matter of preference.

You also need to know that you must now hold down either Alt key while right-clicking on a panel or applet to be able to edit panel preferences or to



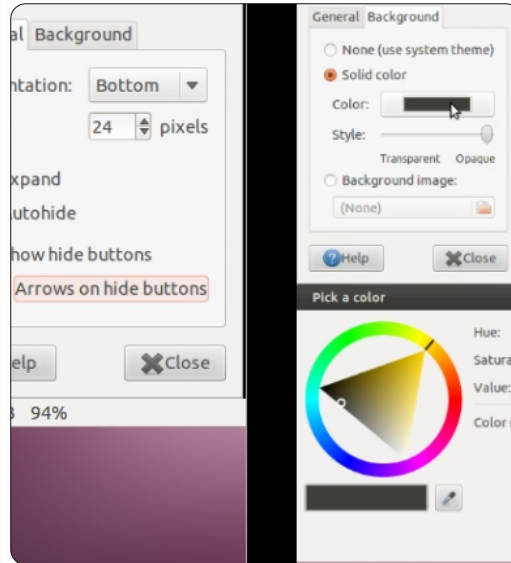
# HOWTO - MAKE 11.10 LOOK 'CLASSIC'

add/edit/move/remove more applets. That was an intentional move by the Gnome devs to prevent people from unintentionally breaking things. And you also can't just add application applets by right-clicking them and selecting "add to panel" anymore. You must now open the "add-to-panel" window and select Application Launcher > Forward, then the window changes and you can click on the "bullet" to the left of each category to display and add any app in the menu to the panel:



But let's also look at Panel Properties settings. Note here that in Panel Properties > Background I've found that 'Solid color' > Color

> Color name #3F3E39 / Style > Opaque results in vastly improved appearance of the Workspace Switcher, a picture's worth a thousand words:



To be perfectly honest, I now forget I'm even using Gnome 3 most of the time other than learning the new keyboard shortcuts which still confuse me. I do know that Ctrl + Alt + T launches gnome-terminal, but even it can be fiddly. I suspect that the new keybindings are truly designed for Gnome Shell, not the "fallback" DE, which I expect to see disappear altogether eventually (hopefully not before the release of Precise Pangolin, though).

Now it's time to move on to how I got there, one step at a time.

## Step #1

We simply need to install 'gnome-session-fallback' - which is already in the Ubuntu repos:

```
sudo apt-get install gnome-session-fallback
```

## Step #2

You'd quickly find that 'indicator-applet', 'indicator-applet-complete', and 'indicator-applet-session' are lacking in "Add to panel". You'll really need either 'indicator-applet' or 'indicator-applet-complete' to display some of the notifications such as mail, the hardware sensors and/or system monitor indicators, and the update-notifier. (I personally only use 'indicator-applet', but we all have individual preferences). So we need to install Jason Conti's PPA (<https://launchpad.net/~jconti/+archive/gnome3>), and our first additional packages:

```
sudo add-apt-repository  
ppa:jconti/gnome3
```

```
sudo apt-get update
```

```
sudo apt-get install  
indicator-applet indicator-  
applet-complete indicator-  
applet-session
```

When that is complete, it's time to take your first look at the new "classic" DE by simply logging out, then clicking on the "gear" to the right of your user name on the login screen, selecting Classic (No effects), entering your password, and logging back in. You'll hopefully see this:



Now, before continuing, please understand that all of these additional steps are optional. No two people want the exact same look, feel, or function out of a DE! This is just what I wanted. Pick and

# HOWTO - MAKE 11.10 LOOK 'CLASSIC'

choose to suit your own desires.

## Step #3

I quickly realized that the purple background of the terminal was killing my eyes, so, in terminal, I clicked Edit > Profile Preferences > Colors, and unticked the "Use colors from system theme" box. Then, in the same window, I clicked on the color block next to "Background color", and used the eyedropper to set the background to white. Ahhhh, much easier on the eyes.

## Step #4

I found the screen lock thing very annoying, I live alone and don't like having to enter my password every time the screen-"blanker" activates. So you can just go to System Tools > System Settings > Screen, and select Lock = Off. (I call it a screen-"blanker", mostly as a joke, because it hardly resembles a screensaver any more).

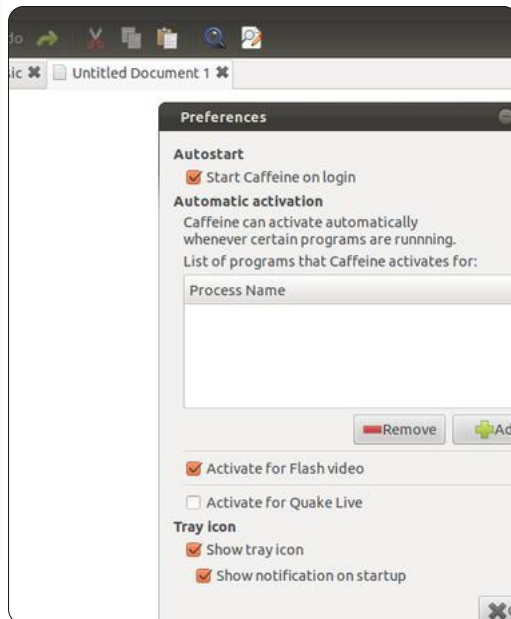
## Step #5

Even after setting Lock to Off, I found it annoying to have the

screen-"blanker" activate while trying to watch videos or such. In Gnome 2, I used to be able to use 'gnome-inhibit-applet', but it's not available in Gnome 3. No worries, I found a very good replacement, Caffeine:

<https://launchpad.net/~caffeine-developers/+archive/ppa>

In my original screenshot, the caffeine applet shows up next to the indicator-applet. I find it to be a sweet replacement for the old 'gnome-inhibit-applet'. Once installed and set up, it allows you to "inhibit" the screen-"blanking", I think a picture is worth a thousand words - so here:



Should you choose to install it you can set up Caffeine by going to Other > Caffeine preferences. Installation is easy:

```
sudo add-apt-repository
ppa:caffeine-developers/ppa

sudo apt-get update

sudo apt-get install caffeine
```

**Note:** This works equally well in Unity.

## Step #6

In Unity, the update-notifications now show up in the Launcher, but, without the Launcher, we now get no persistent update notifications. Still, no worries, I got it to show up in either 'indicator-applet' or 'indicator-applet-complete' in gnome-panel by running the command:

```
gsettings set
com.ubuntu.update-notifier
auto-launch false
```

You can revert that by running:

```
gsettings set
com.ubuntu.update-notifier
auto-launch true
```

## Step #7

I really liked using either 'gnome-sensors-applet' or 'computertemp' to display system temps in the panel, but again they're not available with Gnome 3. Again no worries, Hardware Sensors Indicator comes to the rescue:

<https://launchpad.net/~alexmurray/+archive/indicator-sensors>

More about that here:  
<http://ubuntuforums.org/showpost.php?p=11492701&postcount=4>.

To install, just run these three commands:

```
sudo add-apt-repository
ppa:alexmurray/indicator-
sensors

sudo apt-get update

sudo apt-get install
indicator-sensors
```

It then shows up in System Tools > Hardware Sensors Indicator. After launching it the first time, you must click on the new "applet" which just says "No active sensors", and click on



# HOWTO - MAKE 11.10 LOOK 'CLASSIC'

Preferences. From there you can select which sensors to display, and other options.

## Step #8

It's also sometimes nice to display CPU and memory usage in the panel, so here's System Monitor Indicator:

<https://launchpad.net/indicator-sysmonitor>

More about it here:  
<http://ubuntuforums.org/showpost.php?p=11473552&postcount=208>.

To install just run these three commands:

```
sudo add-apt-repository
ppa:alexefitimie/ppa

sudo apt-get update

sudo apt-get install
indicator-sysmonitor
```

It then shows up in Accessories > System monitor indicator. Do not confuse it with System Monitor in System Tools. I think setting it up is almost self explanatory.

## Step #9

I found the overlay-scrollbar to be inconsistent and annoying in the classic DE, so I removed them, but that was totally a matter of preference, and this is one of those steps that really seems to somewhat break Unity! Should you want to remove them, run:

```
sudo apt-get purge
liboverlay-scrollbar-0.2-0
liboverlay-scrollbar3-0.2-0
overlay-scrollbar
```

**Note:** You'll likely have to reboot for that change to fully take effect.

## Step #10

At this point I decided the window-management buttons really needed to be back on the right so I ran:

```
gconftool-2 --set
"/apps/metacity/general/button_layout" --type string
":minimize,maximize,close"
```

**Note:** to restore the defaults run:

```
gconftool-2 --set
"/apps/metacity/general/button_layout" --type string
"close,minimize,maximize:"
```

Note: This step (#10) can also be performed using Ubuntu Tweak.

## Step #11

At this point, I'm fairly happy, but the scrollbar color is hard on my eyes. It's like trying to differentiate between two shades of white. I'd really prefer having the scrollbars match the dark gray panel or window title-bar with a white background, but I haven't been able to figure that out yet. The best alternative I've found so far is changing the metacity and gtk themes this way:

```
sudo add-apt-repository
ppa:webupd8team/themes
```

```
sudo apt-get update
```

```
sudo apt-get install shiki-
colors-metacity-theme
zukunfttwo-dark-gtk-theme
```

```
gconftool-2 -s --type string
/apps/metacity/general/theme
Shiki-Colors-Metacity
```

```
gsettings set
org.gnome.desktop.interface
gtk-theme Zukunfttwo-Dark
```

I found that fairly pleasing to my eyes (it also replaced the drastic orange with a nice grayish-

blue, and I like the "retro" look of the window management buttons), but if you should decide to revert to the default Ambiance themes just run:

```
gconftool-2 -s --type string
/apps/metacity/general/theme
Ambiance
```

```
gsettings set
org.gnome.desktop.interface
gtk-theme Ambiance
```

**Note:** Both Ubuntu Tweak and 'gnome-tweak-tool' can be used for applying themes, but NOT installing themes.

I'm very open to suggestions about theming - this is simply the best combo I've come up with so far.

## Step #12

I also dislike the missing menu and button icons, so I run:

```
gsettings set
org.gnome.desktop.interface
menus-have-icons true
```

```
gsettings set
org.gnome.desktop.interface
buttons-have-icons true
```

**Note:** This step (#12) can also

# HOWTO - MAKE 11.10 LOOK 'CLASSIC'

be performed using Ubuntu Tweak.

## Step #13

This one is the hardest for me to explain. By default the Oneiric desktop is set to NOT display any icons, but it's possible for the desktop to display any combination of these icons/"actors":

**Computer**  
(computer-icon-visible)

**Home**  
(home-icon-visible)

**Network**  
(network-icon-visible)

**Trash**  
(trash-icon-visible)

**Mounted volumes**  
(volumes-visible)

But, to do so, you must first set the "stage" by running:

```
gsettings set
org.gnome.desktop.background
show-desktop-icons true
```

But that only sets the stage for the actors, now you must decide which actors you want on the stage. You're now the director.

After running that command,

either reboot, or log out and log back in. When you get back to a blank DE background, decide what you want displayed. (Hint, the "true" or "false" at the end of these commands is the key):

To show the Computer icon run:  

```
gsettings set
org.gnome.nautilus.desktop
computer-icon-visible true
```

To hide the Computer icon run:  

```
gsettings set
org.gnome.nautilus.desktop
computer-icon-visible false
```

To show the Home icon run:  

```
gsettings set
org.gnome.nautilus.desktop
home-icon-visible true
```

To hide the Home icon run:  

```
gsettings set
org.gnome.nautilus.desktop
home-icon-visible false
```

To show the Network icon run:  

```
gsettings set
org.gnome.nautilus.desktop
network-icon-visible true
```

To hide the Network icon run:  

```
gsettings set
org.gnome.nautilus.desktop
network-icon-visible false
```

To show the Trash icon run:  

```
gsettings set
org.gnome.nautilus.desktop
trash-icon-visible true
```

To hide the Trash icon run:  

```
gsettings set
org.gnome.nautilus.desktop
trash-icon-visible false
```

To show Mounted Volumes run:  

```
gsettings set
org.gnome.nautilus.desktop
volumes-visible true
```

To hide Mounted Volumes run:  

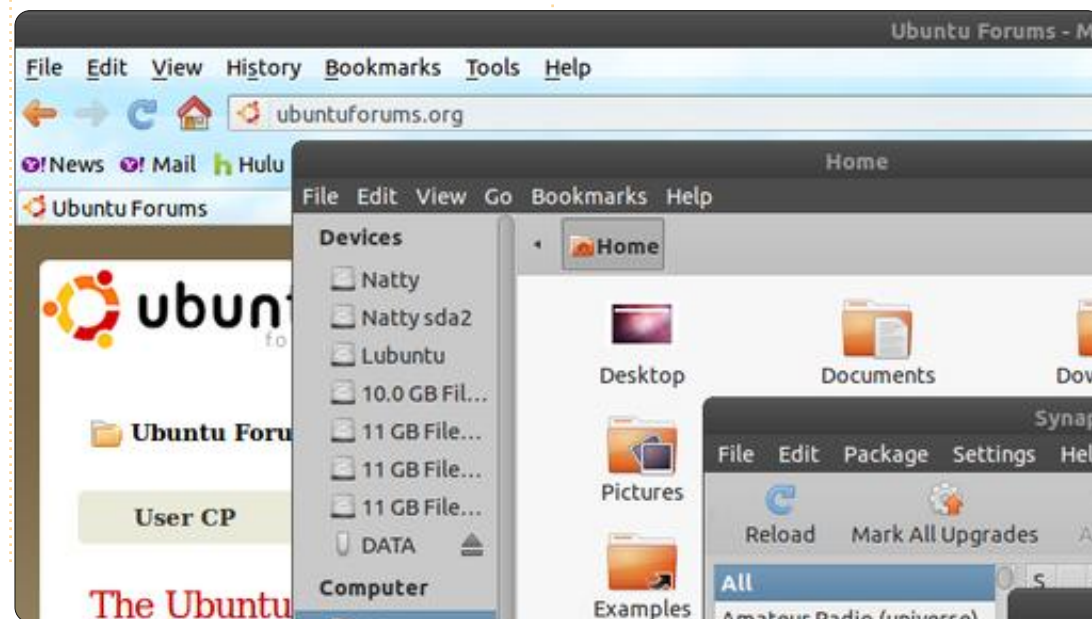
```
gsettings set
org.gnome.nautilus.desktop
volumes-visible false
```

**Note:** This step can also be performed using either Ubuntu Tweak or 'gnome-tweak-tool'.

## Step #14

You may or may not find that you need to disable the Firefox and/or Thunderbird global menu add-ons. It seems to depend on the panel configuration, but I'm not quite sure. To do so in Firefox, just go to Tools > Add-ons > Global Menu Bar integration, and select Disable. You'll then be prompted to restart Firefox. I don't use Thunderbird, so I can't be sure of the specific procedure with it, but I'd think it's similar.

**That's it!** I hope others will share their favorite Oneiric classic tips and tricks. Maybe someone can even share how they got classic to run with Compiz since that's not my thing.





In part 8 of this series, we began our work in Calc, and created and formatted an income section for a budget worksheet. Last month we began our discussion of functions and formulas. In this part, we will continue working on our budget worksheet, and use formulas and functions to do calculations in it.

### Setting Up the Assets Section

D	E	F	G
Assets			
Type	Beginning	Ending	
Period Income Total			
Checking Balance			
Savings Transfer			
Total Expendable			
Savings Balance			
Retirement Balance			
Gross Assets			

If you recall, we had set up a section that contained all of our income items in columns A and B. We will begin our Assets section in cell D1. Move to that cell and enter "Assets" in it. Select cells D1-G1, and merge and center the cells (Format > Merge Cells > Merge and

Center Cells). In cell D2, enter "Type". Merge and center this cell with E2. Enter "Beginning" and "Ending" in cells F2 and G2 respectively. In cell D3, enter "Period Income Total," and merge it with cell E3 (Format > Merge Cells > Merge Cells). In rows D4-D9, enter the following text in order: Checking Balance, Savings Transfer, Total Expendable, Savings Balance, Retirement Balance, Gross Assets. After entering the text in the cells, go back and merge these cells with their adjacent cell in column E (i.e. merge D4 with E4, D5 with E5...).

### Initial Calculations for Asset Section

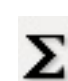
In cell F1, we will place our first calculation using the SUM() function. For this cell we need to total the numbers of column B in our Income section. Enter this formula in cell F3:

**=SUM(B3:B6)**

This formula uses the SUM() function to total the numbers entered in cells B3, B4, B5, and B6.

If your Income section contains more or less income items, adjust the cell reference given to the SUM() function. If you pull out a calculator and add up the numbers, you will find you get the same number as the total calculated by LibreOffice Calc.

In cells F4 and F5, enter amounts for the Checking Balance and Savings Transfer. In cell F6, we will need to sum the three amounts above for the Total Expendable item, but this time, we will use a different method. Select cell F6

 and click on the sum button (shown left) in the formula toolbar. You will notice that LibreOffice automatically finds the three amounts above and creates a SUM() function formula with the range inside. Press Enter to accept the range.

D	E	F	G
Assets			
Type	Beginning	Ending	
Period Income Total	\$6,329.00		
Checking Balance	100		
Savings Transfer	50		
Total Expendable	\$6,479.00		
Savings Balance	1000		
Retirement Balance	5264		
Gross Assets	=SUM(F6:F8)		

Enter amounts for the Savings Balance and Retirement Balance in cells F7 and F8. Select cell F9, and click the sum button in the formula toolbar. Notice that, once again, Calc has selected the two numbers above it, but for an accurate total of the Gross Assets, we need to include the Total Expendable amount. Left click and drag to select the three cells. You should now see the corrected range in the SUM() function. Press Enter to accept.

D	E	F	G
Assets			
Type	Beginning	Ending	
Period Income Total	\$6,329.00		
Checking Balance	100		
Savings Transfer	50		
Total Expendable	\$6,479.00		
Savings Balance	1000		
Retirement Balance	5264		
Gross Assets	\$12,743.00		

### Setting Up the Expenses Section

We will come back to the Assets section to do some more calculations once we get the Expenses section set up. In cell A11, enter "Expenses". Merge and



center the cells A11-G11. In cell A12-E12, enter the following text in the cells: Type, Due, Amt Due, Amt Pay, and Notes. Merge and center the cells E12-G12. This becomes our header row for this section.

In cell A13, enter "Savings", and in cell A14 enter "Retirement". These two expenses will represent deposits into these two accounts, and we will use them in our final calculations in the Assets section. Beginning with cell A15, and going down the A column, enter other expenses like Food, Fuel, Mortgage, Phone, etc. In columns B and C, enter due dates and due amounts for all the items you entered in the Expenses section. Select a few of the items and put payment amounts in the D column. Merge the E, F, and G rows for each of the items.

Formulas in the Expenses Section

In the cell below the last item (column A), enter "Total Expenses:", and merge it with column B on that row. Select the cell in column C for that row. Click the sum button in the formula

toolbar. Calc should select all the amounts in the Amt Due column. Press Enter. In the D column of the same row, type "Total Payments" and merge it with column E on the same row. Select column F of the same row and click the sum button on the formula toolbar. This time Calc jumps all the way up to the last amount in our Assets section, but this is not what we want. This happens because this is the first number Calc found in the column. Select the numbers in the Amt Pay column of the section to change the range. Press Enter.

Final Calculations for the Asset Section

Going back to the Assets section, we will use some of the numbers in the Expenses section to do a few more calculations. Select cell G6. This is the total for our expendable income after all payments have been made. Enter the formula:

=F6-F##

where ## is the row number where the total payments is calculated.

For the ending balance on our

savings account, we need to take the beginning total, add the deposit, and subtract the transfer. If you put the Savings as your first item in the Expenses section, the formula will look like this:

=F7+D13-F5


For the Retirement ending balance, we just need to add the deposit. If you added Retirement as the second item in the Expenses section, the formula will be:

=F8+D14

Finally, we will make the final adjustment to the Gross Assets by summing the three numbers in the G column. Select G9, and click the sum button in the formula toolbar. Calc should select the three numbers

we need. Press Enter.

Our budget spreadsheet is now complete, but it doesn't look very pretty. Next time, we will format our spreadsheet using styles.



**Elmer Perry's** history of working, and programming, computers involves an Apple IIE, adding some Amiga, a generous helping of DOS and Windows, a dash of Unix, and blend well with Linux and Ubuntu.

	A	B	C	D	E	F	G
1	Income this Period			Assets			
2	Sources	Amount		Type	Beginning	Ending	
3	Work	\$1,079.00		Period Income Total	\$6,329.00		
4	Freelancing	\$200.00		Checking Balance	100		
5	Bonus	\$50.00		Savings Transfer	50		
6	Misc	\$5,000.00		Total Expendable	\$6,479.00	\$6,069.00	
7				Savings Balance	1000	965	
8				Retirement Balance	5264	5279	
9				Gross Assets	\$12,743.00	\$12,313.00	
10							
11	Expenses						
12	Type	Due	Amt Due	Amt Pay	Notes		
13	Savings	01/05/12	15	15			
14	Retirement	01/05/12	15	15			
15	Fuel	01/05/12	50	50			
16	Food	01/10/12	130	130			
17	Mortgage	01/15/12	500				
18	Phone	01/20/12	100				
19	Utilities	01/25/12	350				
20	Credit Card	01/01/12	75	75			
21	Insurance	01/15/12	350				
22	Cable	01/15/12	125	125			
23	Total Expenses:		1710	Total Payments:		410	
24							



# HOW-TO

Written by Allan J. Smithie

## Backup Strategy - Part 4 : SpiderOak

In previous installments, we've talked about the features we want in a Cloud Back-up service; this time we're going to try **SpiderOak** to see how it measures up. According to the marketing puff on [www.spideroak.com](http://www.spideroak.com):

*"SpiderOak provides an easy, secure, and consolidated free online backup, sync, sharing, access and storage solution for Windows, Mac OS X, and Linux (Ubuntu, Debian, Fedora & openSUSE)"*



Remember this is a hosted service with its own client software

- built around a particular security and cross-platform model. You don't get a choice of storage locations or hosts.

You can try SpiderOak yourself on the SpiderOak 2GB Free plan, which offers 2GB of on-line storage free for life. This is probably enough to trial the service, and maybe store some essentials such as your unfinished novel and In-box. The next step is a SpiderOak Plus Account that goes from 100GB up to whatever you can afford. The price is \$10 per month per 100GB increment, or pay yearly and get the 100GB increment for \$100. Be aware that tipping over 100.1GB is still the whole \$20 a month. I won't address performance other than to say that SpiderOak software and remote storage runs respectably up and down a domestic broadband connection for both backup and restore. That said, I am not using it to backup an entire hard drive, only selected folders.

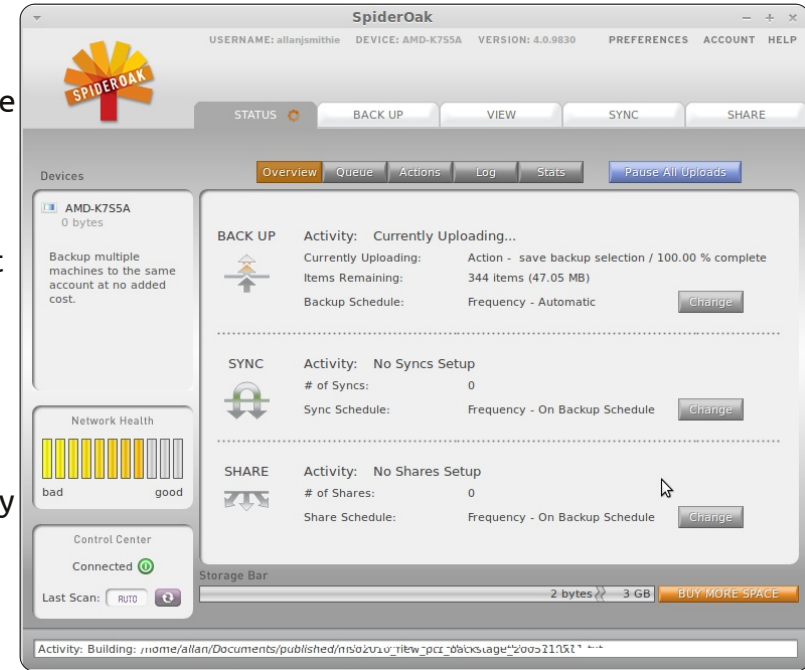
### Software

You can install the SpiderOak

full circle magazine #56

client on as many computers as you like and you can be completely cross-platform. Setting the password for encryption is built into the installer, which is a rapid, guided process.

SpiderOak takes data security very seriously; data is encrypted and transmitted over a secure connection, a layered approach using a combination of 2048-byte RSA and 256-bit AES which encrypts the file and folder names, so even SpiderOak employees can't tell what you have backed up. Of course, if you forget your password, nobody can access your data. A quirk of SpiderOak's security is that any files you backup on one machine are visible on any other machine that uses the same account (with the same SpiderOak account password). Perhaps



consider one SpiderOak account for your personal files, with another account for your family computers, thus avoiding any embarrassment.

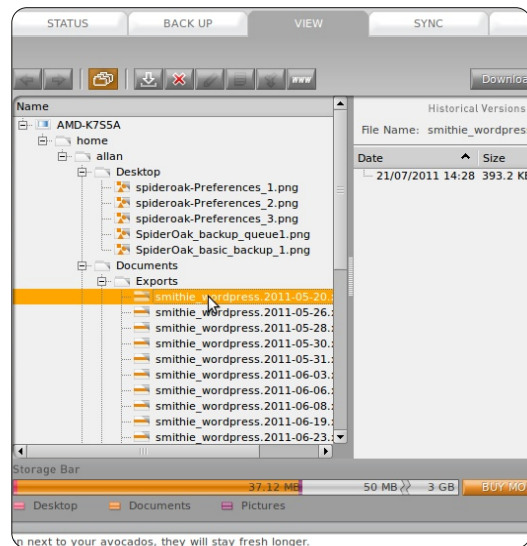
Decide for yourself whether the SpiderOak software looks fashionably 'retro' or just a bit clunky. There is a lot going on - with tabs and, in effect, sub-tabs grouping functions together.

The Status tab provides plenty of information regarding

# HOWTO - BACKUP STRATEGY - PART 4

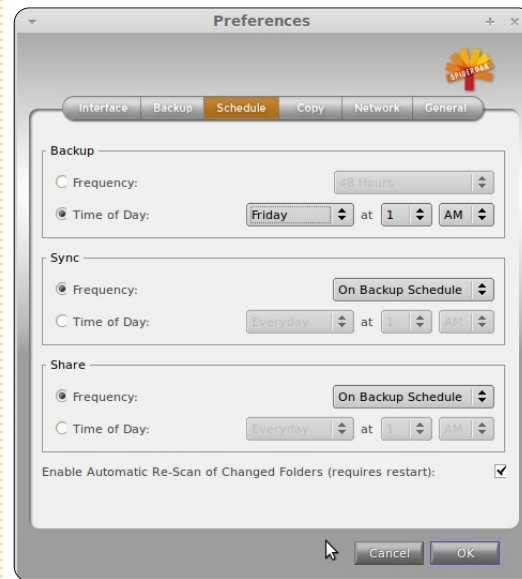
connection, backups, sync and shares, and your current queue. The Back Up tab is just a place for you to specify what files you would like to include in a backup. Each category on the selection list corresponds to a folder on your computer - even 'Desktop'. The bottom bar gauges how much of your cloud storage allocation your selection will occupy, color-coded by folder, so you can see what takes most space.

The View tab is the heart of defining what is selected for back-up down to the file level, along with the version history.



The Schedule tab provides a simple one-stop control for Backup

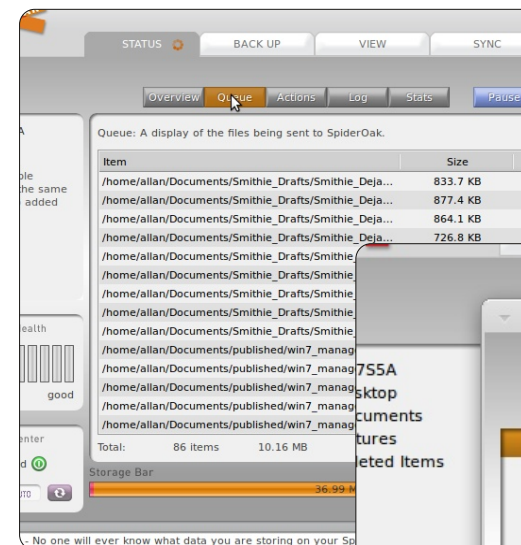
Sync and Share - either to a frequency or to a specific day and hour.



## Version Master

SpiderOak understands version control. Your first backup set is a full set; for subsequent backups of the same defined set, only the incremental changes of the backup set are transmitted, so it won't massively compromise your storage limit to hold several versions of files. If you do breach your limit, you can manually delete old versions. SpiderOak provides version history with no time limit, so if you alter or delete a file you can 'roll back' to an earlier version,

even after months or years. However, don't confuse backup with file-sharing. SpiderOak is like most of the syncing services in that changes are synchronized instantly and in real-time, so that any accidental change you make while on-line will automatically sync to the server.

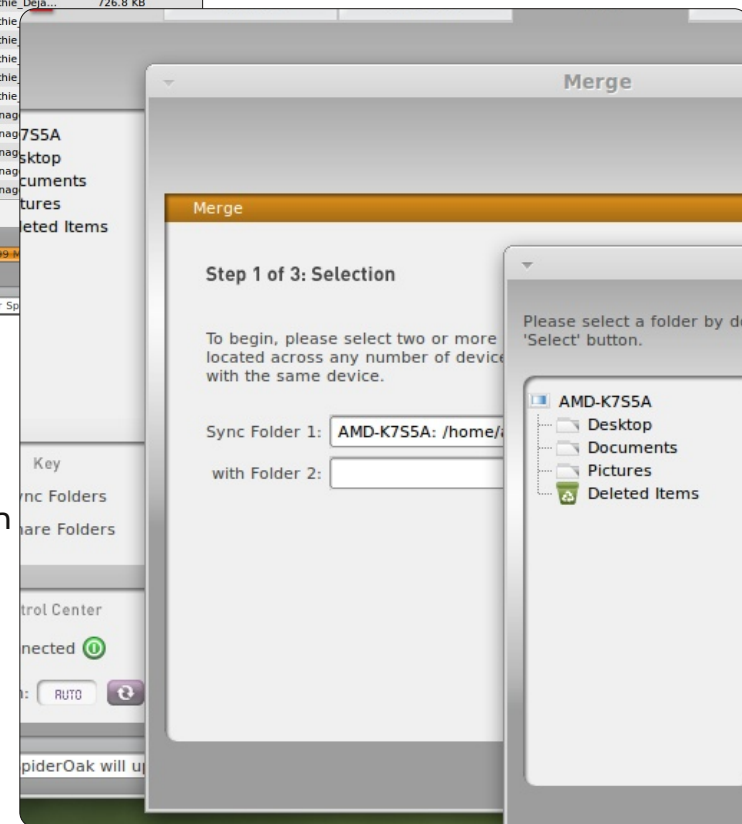


## Merge and Sync

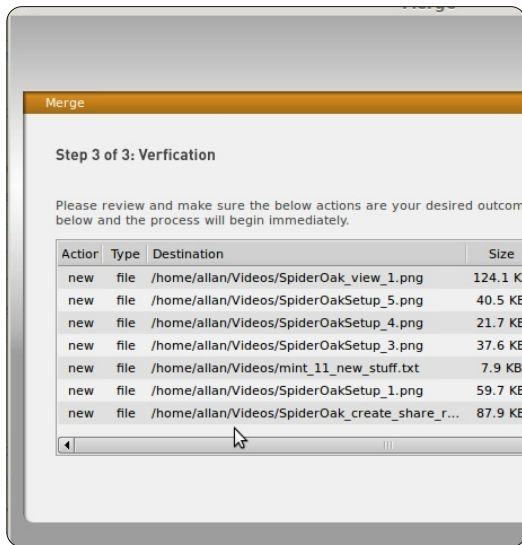
The merge function is where SpiderOak scores for ease of use and utility.

Merge does a one-time merge of all the files in any folders on

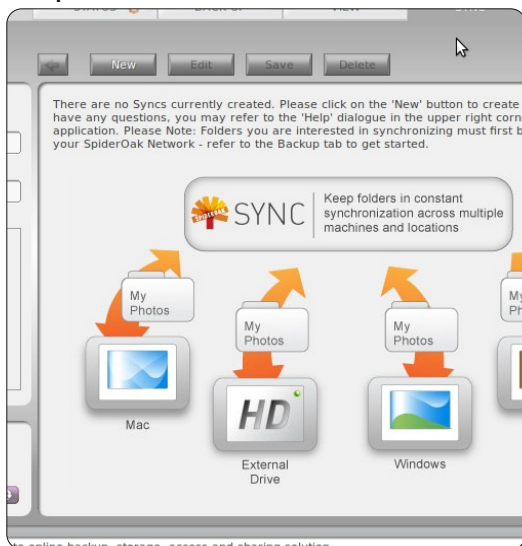
your SpiderOak network. You choose the source folders, followed by a destination folder into which the software should merge them. SpiderOak will work out what's the most recent data of the two sources, and output a list for your review before it carries out the merge. This is nothing radically original so much as an effective packaging of what we used to call diff-scripts with Cloud communications, all wrapped in an effective user interface.





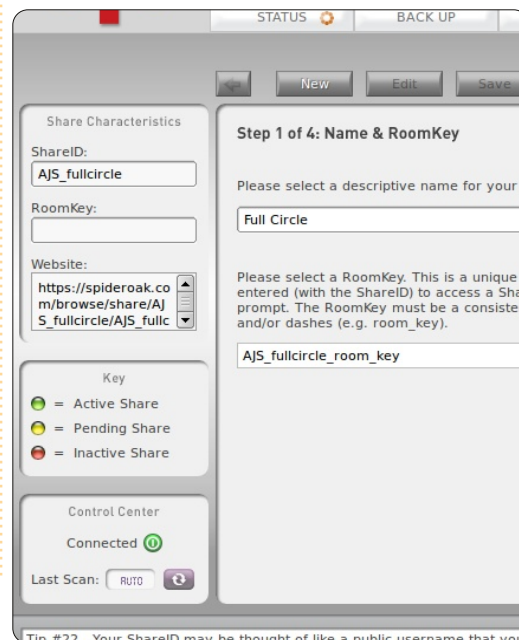


The Sync page is where you set which folders remain synced between your computers, where any number of tools across PC, Mac, and mobile carry out this kind of operation reliably these days; it just happens that SpiderOak is that bit prettier



## Share

It's a much-abused word, these days; 'share'. Not only does SpiderOak run across multiple computers, its public sharing service is implemented through "Share Rooms". These are virtual folders which are password-protected, and through which you can share your data with anyone you like. A change made to a defined synchronization set on any computer running SpiderOak automatically triggers those changes to be published to the share room. Access to the ShareRoom is in one of two ways:



- by entering your ShareID and unique RoomKey on the SpiderOak homepage using the 'Share Login', or
- by emailing out the Shareroom link to guests.

SpiderOak creates an on-line photo album when sharing photos. Like Dropbox's public links, it works fine for posting a few selected images, but it's no substitute for the full range of gallery tools in services like Picasa and Photobucket.

As well as the dedicated clients for Linux, Mac, Windows, and Android, there's a browser-based SpiderOak web-application. You can't upload files from the browser, but you can download any file or whole folder as a zip file, which is saved in your Downloads folder, with a date-time stamp appended to the file-name, giving you much-needed version control information.

## Conclusion

Place your bets on whether SpiderOak will be around as an independent service under its current name in a few months. It's

an effective service, with a feature-rich client, from a small company - just the thing that bigger companies buy up. Balancing features against simplicity, it does cater for most things you need in a Cloud back-up.

**Have a look at the questionnaire for next month's 'I Think' for a chance to win one of five 100GB SpiderOak storage packs!**



**Allan J. Smithie** is a journalist and commentator based in Dubai. His blog, 'No Expert,' is at: <http://allanjsmithie.wordpress.com>



**B**ootable flash drives (often produced by UNetbootin) offer users the option of having a portable operating system (OS). However, session changes cannot be saved, nor can the OS ever be updated. This has proved problematic, especially in light of recent Ubuntu updates for security patches.

An option is to use a persistent flash drive, i.e. a drive designed to accept changes that are saved for future use. Unfortunately, UNetbootin does not offer persistence yet.

Pendrivelinux.com ([www.pendrivelinux.com/universal-usb-installer-easy-as-1-2-3/](http://www.pendrivelinux.com/universal-usb-installer-easy-as-1-2-3/)) offers Universal USB Installer (hereafter referred to as Installer), and it's designed to create persistent Linux drives that not only boot to live mode but also save updates and other changes to a flash drive.

This includes drivers, codecs, updates, security patches, programs, music files, and

documents. Anything changed during a session is saved back to the flash drive - unless you indicate otherwise (an option to ignore changes is offered).

Installer is unique in that it doesn't need installation but instead works off the desktop icon (it's just 900KB), but it has one flaw in being a Windows-only program.

The real curiosity is that it does load and work via Wine, but Installer cannot recognize flash drives unless they are listed by the Windows letter system, something Ubuntu (and Linux in general) does not use. Take my word and don't bother using Installer with Wine - since the end result is nothing but disappointment.

Bummer. Guess I can't complain since it's a free program, but, unless you have XP or 7 running in a VM or dual boot, you'd better plan on borrowing time off a friend's PC.

Fire up the program and you'll get a dialog pop-up that doesn't

look like much until you tick the box to open what reads like a Linux family tree. Best as I can figure, roughly 70 versions are listed here - ranging from sub-200MB guppies to 4GB monsters.

Ubuntu is heavily recognized with 9.x to 11.10 versions - along with similar offerings for Xubuntu, Lubuntu, Kubuntu, Edubuntu, Remix, Rescue Remix, and Server. Rounding out these mainly Canonical choices you'll also see Mythbuntu, Linux Mint (4 varieties), BackTrack (3 choices), or Debian (4 editions).

Installer goes beyond Ubuntu, though, and offers choices range from operating systems to recovery discs, penetration testers, and anti-virus programs (some for Windows, too).

In the drop down list, you'll also find Acronis Rescue, ArchBang, ArchLinux, ArtistX, AVG Antivirus, Avira, BitDefender, Blackbuntu, CentOS, Clonezilla Maverick, CrunchBang, Dbau, DSL, DrWeb, Dynebolic, EasyPeasy, EEbuntu,

Feather Linux, Fedora, Finnix, FreeDOS, Gentoo, gOS, GParted, Jolicloud (now JoliOS), Hiren's Boot CD, Kapersky Rescue Disk, Knoppix, Linux for Kids, Macbuntu, Mandriva, MCNLive, Panda Safe, Parted Magic, PCLinuxOS, Peppermint Linux OS, Ping, Pinguy, PloP, Puppy Linux (4 versions), Redo Backup, Rin, RIP Linux, Runt, Sabayon, Simply Mepis, SLAX, SLiTaz, T(A)ils, TinyCore, Ultimate Boot CD, Ultimate Edition Lite, Linux XP Lite, Wifiway, xPUD, XBMC, YlmF, and Zenwalk.

Forgive me if I missed a couple or misspelled others, but it's apparent nearly every Linux and desktop variation has a representative in this group somewhere.

Can't find your favorite? An option at the bottom allows for those not listed, and I understand some techies have managed to use Installer to create bootable Windows XP versions, although I'm sure Microsoft's attorneys are really interested in that development.

# HOWTO - CREATE A PERSISTENT USB STICK

Since this is an Ubuntu-based publication, I'll stick with those variations.

**Lesson number one** – don't even think of using that 1GB flash drive you've had hanging around in the desk. If base Ubuntu is pushing 800MB, that leaves no more than 200MB for storage - and that's not much. And if you plan on using one of the big boys like ArtistX or Ultimate Edition, you can plan on using a much larger flash drive since they start at 3GB.

Consider 2GB the minimum for base Ubuntu, but don't go over 8GB. Installer limits persistence space to 4GB, so even the largest OS plus persistence won't exceed 8GB.

Size is not the only consideration, though. Users that computer hop are best served by i386 32-bit versions. 64-bit varieties limit you to that processor, while a 32-bit OS will work on just about any computer out there.

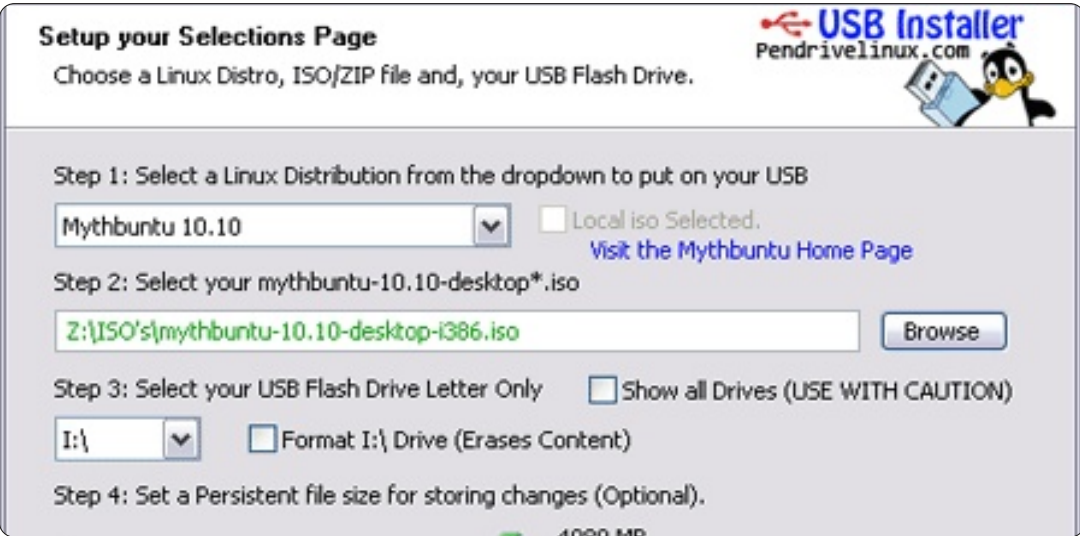
**Lesson number two** – some online tutorials are out-of-date. A

new version of Installer was issued in early April, 2011, so much of the information online from before that month is now outdated.

For example, some of these sources state CD/DVD or flashcard-based .iso images can be used by Installer as the source code; however, I could never get these to work. Don't know if it's a program tick, or something changed with the newest version, but Installer would not recognize anything for me unless it was downloaded by the program.

That isn't necessarily bad at all. Installer reaches out to the OS of choice website and drags the .iso image back for you. Let's be realistic and admit not all websites are created equal, and some developers put more flash in their sites than they do their OS. It may take a little while but it beats playing hide-and-go-seek with a buried OS.

Now that you've seen what Installer looks like, it's time to go close up and personal with what it can do. There are 4 progressive steps, i.e. each step cannot be accessed until the previous one is



completed successfully.

You will see:

**Step 1:** Linux distribution selection. Pick the version desired from the massive listing I mentioned earlier. Installer will access the Internet if the "Locale ISO Selected" box is not ticked. Opting for an OS not listed means you'll have to point Installer to the URL, but, in any case, expect a wait as the OS is downloaded.

**Step 2:** Here Installer locates the .iso image. By default, it points to what it just downloaded. If not, there is a browse button to help it along.

**Step 3:** Flash drive (final

destination) selection. It defaults to the inserted flash drive. FAT32 is used, and, if you don't know how your drive is set, count on using "Check this box if you want to format the Drive".

Make sure Installer picks your intended drive letter! Having the wrong selection can and will delete everything on that drive!

**Step 4:** Persistence allocation. This doesn't appear until step 3 is completed. The newest Installer version from April 2011 picks the remaining flash drive space, up to 4GB.

Earlier versions require users to pick persistence space, and this caused confusion since persistence



# HOWTO - CREATE A PERSISTENT USB STICK

is independent of OS size. Users had to know OS size along with drive size to determine persistence, and choosing the wrong figure could create a fatal error.

The only problem with this system is that it lacks feedback. You have to assume how much of the flash drive is reserved for persistence, and there is no way of telling until after the first boot. I used an 8GB flash drive that never presented a problem since Installer always took 4GB irrespective of OS size.

**Lesson number three** – no current Ubuntu based OS exceeds 4GB, far as I know. That means an 8GB flash drive is safe for any OS in this category since the fattest version plus 4GB persistence will not exceed flash drive capacity.

Once everything is set, click Create, and take a break. You won't have to wait more than 5 to 15 minutes before seeing the successful completion notification.

Testing is merely a matter of resetting the BIOS on a computer to boot from the persistent drive. If

all goes well, the Ubuntu menu should appear with the first option being "Run Ubuntu from this USB".

Some reviewers have complained that boot times are sluggish but this isn't totally true. The first boot requires users to input keyboard style, language, time zone, etc, but once that information is saved, future boot times are within standard live-mode parameters (base Ubuntu 10.10 came up within 1 minute).

Keep in mind you are operating from a flash drive, so lag time is inevitable as programs are accessed, but flash drives are still quicker than comparable DVD versions.

Another thing to remember is that changes will result in garbage file accumulation. Dead kernels and update files will still hang around, so plan on using Computer Janitor or Ubuntu Tweak to get rid of those - or your drive will fill up quicker than you realize.

This is where Disk Usage Analyzer comes into play. Be sure to check it often since there is no feedback on remaining drive space,

and you don't want to find out too late that all your effort cannot be saved because insufficient space exists. If you lack that program, right click the desktop icon or file, and get remaining space information.

Once the command to shut down is given, users are asked to save or ignore changes made, and the computer shuts down just like a live mode CD/DVD would.

Now for the question that I'm sure a few are itching to ask. Is full installation still an option, and will changes made to the original drive transfer?

The "Install Ubuntu x.xx" icon is on the desktop, and everything you've added, deleted. or otherwise changed in past sessions, will still be there just as you left it earlier. Full installation is the same as using a live-mode CD/DVD.

No program is faultless, but computer hoppers will have to realize that no two computers are the same. Using the drive on various units means parameters have to be changed for each. For

example, wireless codes are not the same, but I did discover that Installer can save multiple codecs, drivers, and even wifi passwords, for various computers, and will adjust itself as it recognizes them.

Ah, but there is another question some have asked. Can Installer create a multi-boot persistent flash drive?

No, it's a one-OS program, but its cousin, Yumi (Your Universal Multiboot Installer) will. It's offered on the same website, but I can't comment on it yet – that's my next experiment (although my initial peek shows it to be Installer with the added capability of creating multiple partitions on one flash drive).

Using a 5-diamond rating system, I'd give Installer 4 - based upon its ease of use, extensive OS listing, program design, and end results. I dropped it a point for being a Windows only program, and for having a flash drive recognition system that, although better than originally designed, still doesn't tell users how much storage space they have until after the initial boot.



# HOW-TO

Written by Chris Rheinherren

## Connect To IRC

IRC stands for Internet Relay Chat. It's the oldest, largest, and most well-established text-based chat system on the Internet. It's also quite popular, and used world-wide. Only web browsing and email are used more than IRC. At any given time, there are nearly 800,000 users accessing the various IRC networks.

In order to connect to IRC, you need an IRC client. Just like you need a web browser to surf the web, it serves the same purpose: a program that allows you to access the service. There are a number of different options available, there are GUI based clients such as X-Chat, Konversation, and an IRC plug-in for Pidgin. Also there are terminal clients such as IRSSI and others. X-Chat and Pidgin are primarily used on GNOME and Unity, while Konversation is part of the KDE desktop environment. But feel free to use whichever you feel more comfortable with. I use the terminal IRSSI myself, and, from time to time, use the IRC function built into Pidgin. There are also web-based clients.

When you run your IRC client for the first time, the first thing to do is tell it what nickname you want to use. How you do it will depend on what client you choose.

In general, on IRC, you are allowed to use any nick you'd like - as long as no one else is using it at the same time. However, on Freenode (and many other networks), it is possible to register your nick so that you are the only user allowed to use it. To do this, type:

```
/msg nickserv register
<password> <email address>
```

For example: `/msg nickserv register foo foo@bar.net`

Then, every time you log in with that nick, the first thing you should do is type:

```
/msg nickserv identify
<password>
```

For example: `/msg nickserv identify foo.`

Registering your nickname is useful for several reasons, here are

a few. Sometimes, due to certain conditions on the Internet, you get disconnected from the server, reconnect, and find that your nick is still in use. In other words, you got disconnected, but the server hasn't found out yet and thinks your old connection is still active. If you haven't registered the nick, you'll have to wait for the old connection to die (which could take a while), but if you've registered your nick, you can take the initiative and have it killed. To kill off a "ghost" like that, use the ghost-kill command:

```
/msg nickserv ghost <nick>
<password>
```

with the ghost's nick and your password in the appropriate places. This will cause NickServ to force that connection to terminate, allowing you to change your nick back (with `/nick`) and go about your business.

Also the network where your nick is registered will keep the name reserved just for you or anyone who has the password. How

long it is kept reserved varies from network to network, however.

If you forget to identify for your nick, NickServ may change your nick. However, there is usually a time delay that prevents rapid nick changes - just wait a few seconds to change your nick again. Remember that you will still have to identify once you've changed the nick, otherwise NickServ will give you the boot again. To change your nick, use the `/nick` command.

Now you can connect to IRC. There are several different IRC networks, each with their quirks. The one I spend most of my time on, and the one I have the most experience with, is the OtherWorlders network. OtherWorlders is a small network primarily aimed at the paper-and-pencil gamer community, so if you play D&D and other RPGs, then it may be something you should check out. Its connection address is `irc.otherworlders.org`

Additionally, there are the BIG 4 networks of Undernet



# HOWTO - CONNECT TO IRC

(irc.undernet.org), Quakenet (irc.quakenet.org), Dalnet (irc.dal.net), and IRCNet (irc.ircnet.org). There is also Freenode (irc.freenode.org) which is the home to many open source projects and related chats. All of the official Ubuntu chats are located on Freenode, including the chat for Full Circle Magazine.

On IRC, chatrooms are called Channels, and generally begin with the # sign, such as #fullcirclemagazine. Since IRC is based solely on text, all commands are entered via the keyboard. The first important command is join, this allows you to join a channel, or create a new one if it doesn't already exist. In order for the server to know that you have issued a command instead of wanting to send text to the current window, all commands are prefixed with a forward slash: /

So to join our #fullcirclemagazine chat on Freenode after we connect, the command is:

**/join #fullcirclemagazine**

Once in the channel, you can go ahead and talk! Anything you type

in the channel is sent once you hit Enter, unless it is prefixed with the forward slash to indicate it is a command being sent to the server.

If you start your message with the word /me, it will broadcast your message in the third person (this is used for emotes and actions): for example, if I (nick = Bynw) type:

**/me does jumping jacks**

it will show up in the channel as:

**\* Bynw does jumping jacks**

...and sometimes in a different color depending on the client. (Note: be sure you write your actions in the third person, instead of falling back on the first person, since it's supposed to be describing something you're doing as if the other people in the channel are seeing it. It's a common mistake to write something like "/me goes out to get myself a drink", which would show up in-channel in my case as "\* Bynw goes out to get myself a drink", which sounds awkward)

To change your nickname, you use the /nick command. The next word after /nick becomes your new nick: e.g., if I want to show that I'll

be away from the computer for a while, I'd type:

**/nick Bynw-afk**

to change my nick to Bynw-afk (AFK stands for "Away From Keyboard").

If you want to join another channel, use /join. Put the channel name after /join, like this:

**/join #fullcirclemagazine**

If the channel doesn't exist yet, it will be created and you will be its operator.

If somebody is bothering you, most clients have an /ignore command. To prevent any messages from a specific user from showing up in your client, type /ignore followed by the nick of the offending party.

If you ever want to leave a channel, you use /part. Put the name of the channel after /part: to leave #fullcirclemagazine, you'd type:

**/part #fullcirclemagazine**

If you want, you add a message

after the channel name, which will show up as a "parting message". This doesn't make you leave IRC or disconnect from the server or network, however, only the specific channel. You can be in multiple channels at the same time.

If you want to log off, you use /quit. You don't have to type anything after /quit, but like /part you can add a message if you like.

Finally, /help is implemented in most clients as a way to access help pages. It also allows you to specify what you want help on by adding parameters to /help. For example, to get help on the /ignore command, you'd type:

**/help ignore**

In the list of users on the channel, some are prefixed with an @, ~ or & and usually show up at the top of the list. In other clients, these may show as different types of icons. These are the channel operators, commonly called chanops or just ops. The ops run the channel - they can kick people out, ban people from entering, change the channel's modes (how it behaves), and more. They're there to keep the channel running



# HOWTO - CONNECT TO IRC

smoothly. Those that have the ~ in front of their names are higher ranking channel ops, usually the channel owners, while those with the @ sign are channel hosts.

On some channels, you'll see some users with a + sign in front of their nicks. This is called "voice", and it's really only meaningful on moderated channels (channels with the mode "m" set), where it means that they are allowed to speak. On unmoderated channels, it's usually just there for show, or to designate some special status about the user.

Both users and channels have different modes available. These are designated by different flags given to a channel or nick. Most IRC networks now automatically set all users on connect to +i which is the "invisible" mode. This prevents you from showing up in lists of all users on the network. So, to talk to you, somebody either has to join a channel you happen to be on or already know your nick. If you have this mode set, you are much less likely to get random messages from people you don't know asking you if you want to chat. You can turn it on by typing "/mode +i" and off with "/mode -i". It's nice to have.

Other user modes exist, but some are reserved for admins and IRC operators (called IRCops, or ops, these folks help run the network, but unlike the admins they don't have physical access to the servers). You won't be able to set these on yourself, and they're really not that interesting to anyone who isn't running the show anyway.

When you're in a channel, your client shows a bunch of characters like "+nrtu" in the title bar along with the name of the channel and the topic. These are channel modes, which give the channel special characteristics. They can only be set by the ops

+i - invite-only. To enter this channel, an op has to have invited you in with the /invite command.

+k - key. To enter this channel, you need to add a special password after the channel name when using the /join command.

+l - limit. No more than a certain number of users are allowed into the channel at a time. The number itself appears after the list of modes.

+m - moderated channel. Only ops and voices can speak, everyone

else is muted.

+n - no outsider messages. Only users in the channel can speak on it. Almost all channels have this mode set. Setting this mode is one of the first things most people do when they form a channel.

+p - private. The channel does show up in a list of channels (the /list command) but the topic cannot be viewed from the list.

+r - registered. The channel has been registered with ChanServ. (This can be set only by ChanServ, not normal users)

+s - secret. The channel doesn't show up in a list of channels (the /list command) or in the /WHOIS <nick> info, which lists the channels a given user is in.

+t - Topics set by ops. When this is set, only ops can set the channeltopic. If it's not set, then any user in the channel can set the topic with the /topic command. Like +n, almost all channels have this.

As well as these general modes, there are a few that affect specific users. These don't show up in the list of modes:

+o gives a user op status,

+v gives a user voice,

+b bans a user (prevents them from entering the channel or, if

they are in the channel, prevents them from speaking).

ChanServ, along with its partner NickServ (and others - depending on the network) is a program that runs on the network with special privileges. Its job is to maintain channels that have been registered with it. It automatically gives ops to the channel founder and to other users designated by the founder.

To get more info on the services, type:

```
/msg nickserv help
/msg chanserv help
/msg <otherservname> help
```

As well as chatting on channels, it's possible to chat privately with individual users. Most GUI based clients do allow you to double-click on a user's nick in the list of names on a channel to open a new window for chatting with that person. You can also type:

```
/msg <nick> <message>
```

on any client. On most clients, each private chat usually gets its own window.

Sometimes a bunch of users will

# HOWTO - CONNECT TO IRC

seem to all quit at once with the same quit message. What happened is that their server has lost contact with your server. This is called a "netsplit", since it splits the IRC network into two pieces. The strange quit message is actually the addresses of the two servers that lost contact.

If someone suddenly loses their connection to the server, then they may quit with the message of "connection reset by peer" ... or system generated quit messages such as "ping timeout", this happens, again, if your connection dies and the server issues a ping to your connection to see if it is still active and doesn't get a reply back.

## Installing the various chat clients for IRC.

All of them are available in Ubuntu's repositories. Just use the Ubuntu Software Center, terminal apt-get, or other package management software of your choice, in order to install X-Chat, Konversation, IRSSI, or Pidgin and its IRC addons.

With Pidgin, it's also best to install the IRC extras plugins - IRC

helper and IRC more at the very least. For Pidgin, go to Accounts > Add and choose IRC. On the Basic tab, choose your username, that is your Nick on IRC. For server, put in irc.freenode.org (to get to Freenode, or whatever network you want to connect to is fine). There are other options on the Advanced tab, but we can look at those another time. And go ahead and click Add. You will automatically be connected to Freenode, but will be outside of a channel at this point. If you get any kind of a message about NickServ asking for your password and you haven't registered yet, then you will need to choose another nick with the /nick command.

You can use the Join a Chat option under Buddies in Pidgin to join the #fullcirclemagazine channel. From here you can chat away with all of us.

For IRSSI, it's a bit more complicated, since there is no GUI and everything is done via the terminal. But still, you start the application, connect to a server of your choice, then join a channel so you can chat away. There are more complexities and you should read its documentation for them.

A few other features of IRC are: CTCP (client to client protocol) isn't used much. But it's good to test for lag on a connection using /ctcp ping nick or #channel and there are a few other commands that may be available depending on the client you use. Check out your client's help file for those.

It's possible to trade files over IRC using a feature called DCC (which stands for Direct Client Connection). Most GUI based clients have menus and other options to make this task easier. DCC is fairly convenient and trustworthy for moderately-sized files like text, graphics, or short sounds. For longer files like movies, you'll want to use another means of transmission. Remember this is IRC ... Internet Relay Chat - not file transfer.

You can also use DCC to chat. The main difference between regular private chat and DCC chat is that DCC chat, once started, is independent of the IRC network itself - even if the entire IRC network crashes, or one or both of the people chatting disconnect from the server, the chat will be unaffected.

DCC works by trading IP addresses, then creating a direct connection between the two computers that bypasses IRC completely.

**I hope to start monthly IRC chats sometime in early 2012. I'll send a message to those of you who've subscribed via the FCM site, and via Facebook and Google+. Feel free to experiment with your IRC client using the FCM chat room. I hope to see you there! - Ed**





## Guidelines

**T**he single rule for an article is that **it must somehow be linked to Ubuntu or one of the many derivatives of Ubuntu** (Kubuntu, Xubuntu, Lubuntu, etc).

Write your article in whichever software you choose. I would recommend OpenOffice, but **PLEASE SPELL AND GRAMMAR CHECK IT!**

## Writing

In your article, please indicate where you would like a particular image to be placed. Please do not embed images into your Open Office document.

## Images

Images should be JPG with low compression.

Regarding image sizes: if in doubt, send a full size screengrab and we will crop the image.

If you are writing a review, please follow the guidelines shown here.

For a more detailed list of the style rules and common pitfalls please refer to: <https://wiki.ubuntu.com/UbuntuMagazine/Style> - in short: US spelling, no l33t speak and no smilies.

When you are ready to submit your article please email it to: [articles@fullcirclemagazine.org](mailto:articles@fullcirclemagazine.org)

If you can't write articles, but hang out in Ubuntu Forums, send us interesting forum threads that we could print.

## Non-English Writers

If your native language is not English, don't worry. Write your article, and one of the proofreaders will read it for you and correct any grammatical or spelling errors. Not only are you helping the magazine and the community, but we'll help you with your English!

## REVIEWS

### Games/Applications

**When reviewing games/applications please state clearly:**

- title of the game
- who makes the game
- is it free, or a paid download?
- where to get it from (give download/homepage URL)
- is it Linux native, or did you use Wine?
- your marks out of five
- a summary with positive and negative points

### Hardware

**When reviewing hardware please state clearly:**

- make and model of the hardware
- what category would you put this hardware into?
- any glitches that you may have had while using the hardware?
- easy to get the hardware working in Linux?
- did you have to use Windows drivers?
- marks out of five
- a summary with positive and negative points

**You don't need to be an expert to write an article - write about the games, applications and hardware that you use every day.**





Online  
**BACKUP**

Secure  
**SYNC**

Easy  
**SHARING**

Whether you need to access a document you have stored on a remote server, synchronize data between a Mac, Windows or Linux device, share important business documents with your clients, or just rest easy knowing all of your data is safely, securely, and automatically backed up - SpiderOak's free online backup, online sync and online sharing solution can handle all your needs!

SpiderOak offers a different approach to online backup by combining a suite of services into one consolidated tool - free online backup, synchronization, sharing, remote access, and storage. This difference is further measured in our zero-knowledge privacy policy - the first one ever employed in this setting. Our flexible design allows you to handle data from any operating system (Mac, Windows and Linux) or location (external drives, network volumes, USB keys, etc...) using just one centralized account.

- ➔ Access all your data in one de-duplicated location
- ➔ Configurable multi-platform synchronization
- ➔ Preserve all historical versions & deleted files
- ➔ Share folders instantly in web ShareRooms w / RSS
- ➔ Retrieve files from any internet-connected device
- ➔ Comprehensive 'zero-knowledge' data encryption
- ➔ 2 GBs Free / \$10 per 100 GBs / Unlimited devices

<https://spideroak.com>

Download mobile clients  
for **iOS & Android**

**JOIN SPIDEROAK NOW**  
Get 2 Free GBs



Every year, around this time, my wife and I are normally invited to a few parties. This year we decided we wanted to stay home - and host a few parties. We wanted an all-in-one entertainment solution that we could quickly switch between music, movies for the children (or children in us), and pictures. A number of pre-packaged multimedia solutions exist out there, but we wanted the flexibility of open-source. We decided to create our own XBMC - XBMC Media Center (formerly known as XBox Media Center)

system.

XBMC will run on most hardware that runs Ubuntu 10.04 or later. If you want to decode high definition video, a dual-core processor is strongly recommended. Since we're decoding video, a good video card is also recommended. Those things said, my wife and I opted for the portability and elegance of a Dell Inspiron Mini 1012 netbook over a high-powered but clunky looking PC sitting beside our television. I'd mentioned the project to a friend whose company just bought a bunch of HP computers that came

## XBMC (Xbox Media Centre)

complete with HP media center infrared remote controls and USB infrared receivers. In the past, we've connected a wireless keyboard to our media systems, but a remote control is much friendlier and takes up a lot less space.

We ran XBMC for some time on Ubuntu 11.04, but arrived at a point where it was crashing daily. This may have been due to the Intel video chip inside our Mini, which has been causing grief for a lot of people lately. One solution is to use VESA drivers, but it's not really a solution for a media center, so we backed up and installed Ubuntu 10.04 LTS and haven't had a problem since.

Installing XBMC is relatively easy on Ubuntu 10.04 or later. In a terminal, type the following 5 commands:

```
sudo apt-get update
```

```
sudo apt-get install xbmc  
xbmc-standalone
```

```
sudo apt-get update
```

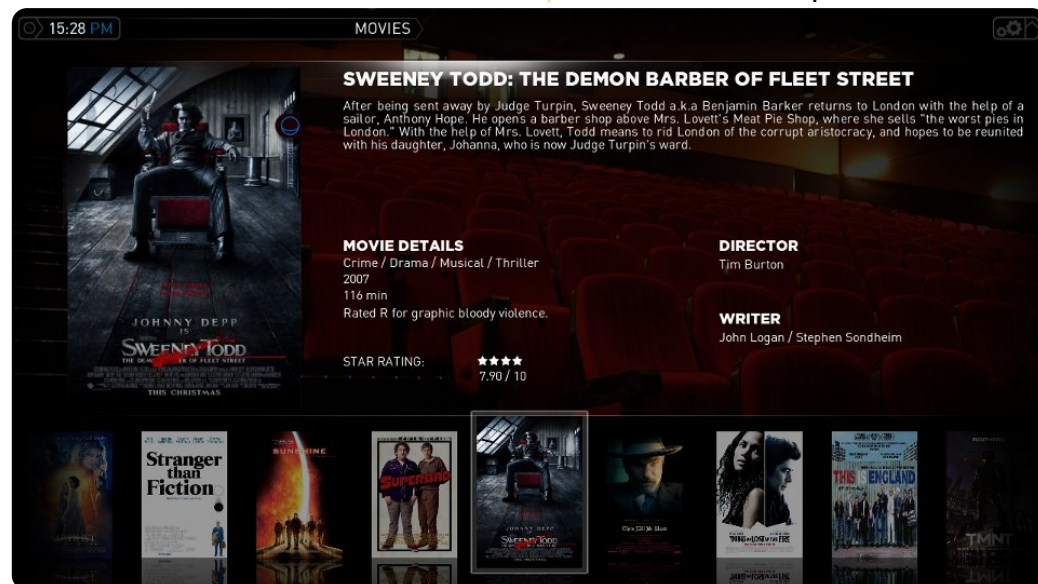
The second command adds the PPA (repository) for XBMC on most versions of Ubuntu. Unfortunately, it seems the team has yet to make an Oneiric branch, so, if you're using Ubuntu 11.10, try adding the following repository:

```
sudo apt-add-repository  
ppa:nathan-  
renniewaldock/xbmc-stable
```

Again, we find XBMC on 11.10 unstable, but that doesn't mean you'll have the same experience if you're using an NVidia or ATI video card. Nvidia card owners should add VDPAU hardware acceleration:

```
sudo apt-get install  
libvdpau nvidia-185-libvdpau
```

The last step is adding support for remote controls. While XBMC worked out of box with our HP remote control, I found some of the buttons were not working



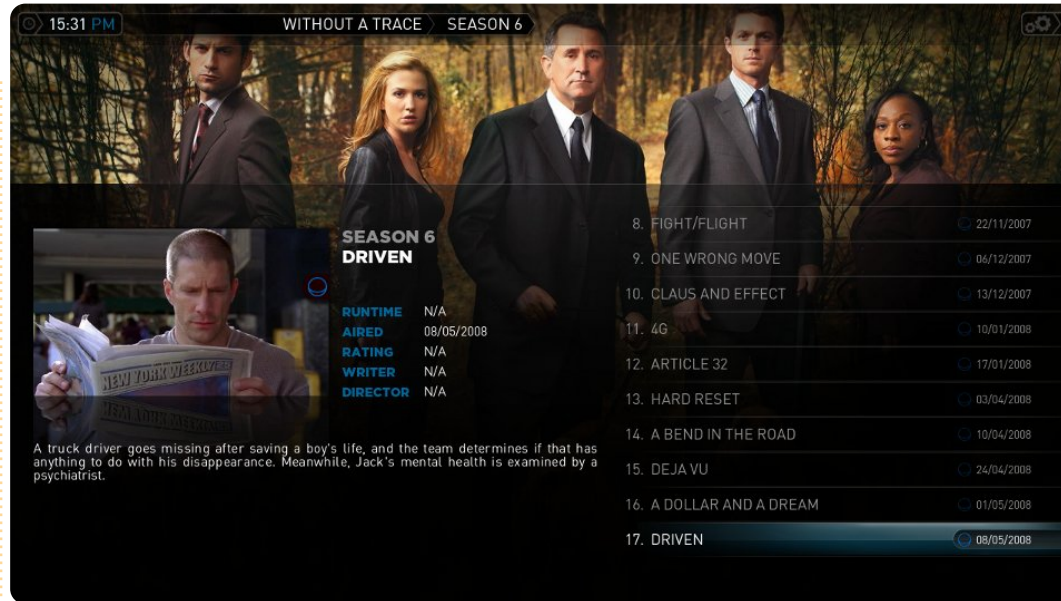


correctly, so I installed lirc support:

```
sudo apt-get install lirc
```

On the remote selection screen, I chose the Windows Media Center Transceivers/Remotes (all). This selection was all we needed to do to get most of the other buttons on the remote working perfectly.

Now, it's time to run XBMC for the first time, and add your media. The XBMC main menu is divided into 6 menu options: weather, pictures, music, videos, programs, and system. Adding media to XBMC is just a matter of adding the media to the right area. For each of pictures, music, and videos, navigate to the appropriate menu option and press ok/select on your remote. Without any media added you'll see a couple of options - Add-ons and Add source. Select Add source, then browse to the area where your media is stored, give it a name, and click OK to accept the choice. You can have multiple sources for the same media. To differentiate sources, simply give the source a different name. For example, you might have pictures from last Christmas and an office party (a good mix with the right music).



Once you have all your media imported, the party can really begin. XBMC, like a lot of other great open-source software, supports a myriad of options, skins, and plug-ins. One of the options I like most is the ability to view content in a variety of ways. Pressing the left arrow button on the remote control brings up a side panel that lets you choose the view and sort method. The misc options lets you hide watched content, filter content, and hide fanart - among other things. But these views don't look so great without cover art. To add cover art to new content, select the content and hit the info button on the remote.

XBMC can also automatically fetch cover art by System > Video > Library > Update library on startup. XBMC can also autofetch cover art for music much the same way by selecting System > Music > Library and Update library on startup.

One of the more confounding problems we ran into was getting the weather correct. We set our location to Waterloo, Ontario (Canada), but kept getting Fahrenheit. To make the switch to Celsius, we needed to set the Region under System > Appearance > International to Canada. We also ran into a problem where the weather.com default seemed to stop working. We managed to fix

this by changing the weather source in the System > Weather menu to Weather Plus (which we found by clicking the Get More button at the bottom of the source screen). Not exactly party material, but useful to know for those having problems getting weather working.

What is cool for a party is the ability to play music and run a slide show of photos from all those crazy office parties - and it's easy to do. First, cue up music by selecting the music folder you want to play. Incidentally, if you press the right arrow on the remote while in the music folder, you can set music to repeat or play randomly. Next, press the Pictures button on the remote control, navigate to the pictures source you want, and hit Play. A photo slide show starts with a small rectangle in the bottom left corner displaying information about the song currently playing.

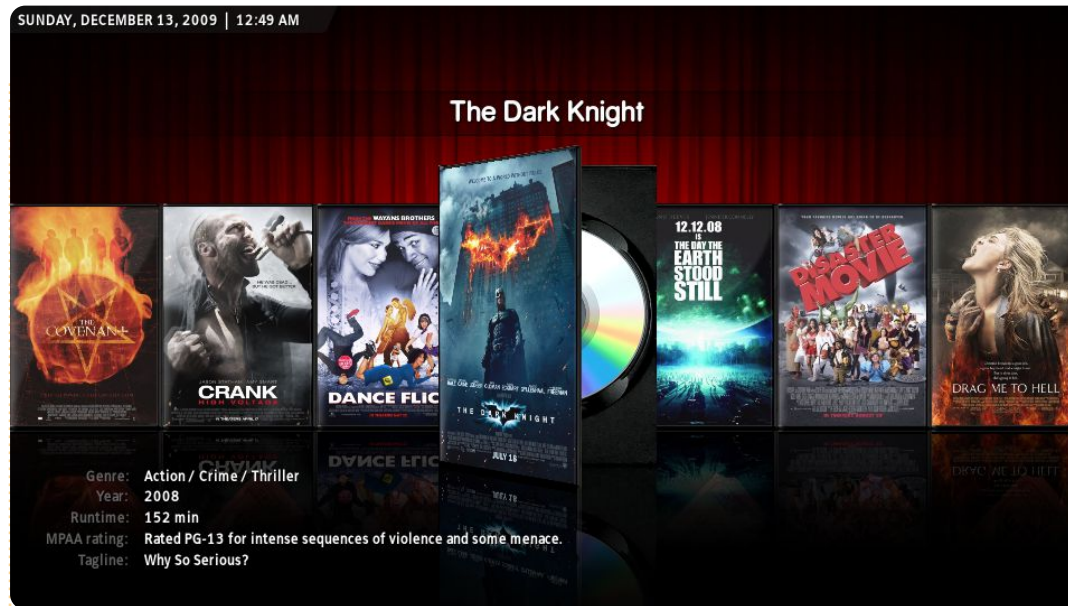
The same technique works if you want to check the weather or check out your video collection. XBMC is smart enough not to play music and movies at the same time. It's either music or movies,



you can't play both the same way  
you can play music and pictures at  
the same time.

XBMC is great at recognizing  
movies, but XBMC also recognizes  
television programs. When naming  
television series include the season  
and episode. For example: The IT  
Crowd s02e03 (The IT Crowd  
Season 2, Episode 3, way better  
than The Office if you ask me). If  
XBMC doesn't recognize a movie or  
television show, try variations on  
the name. If you're really stuck, try  
to find the program on  
thetvdb.com or themoviedb.org  
(sources XBMC draws on).

We've covered only a tiny set of  
XBMC's capabilities. Video add-ons  
let you stream television and  
movies from different sources like  
Youtube, Yahoo video, the Cartoon  
Network, CNet, Jupiter  
Broadcasting, and the Internet  
Archive - to name a few. Music add-



ons include streaming from  
sources like Grooveshark, TWiT,  
NPR, ListenLiveEU (which has over  
600 stations listed), and  
SoundCloud. Also be sure to check  
out the add-ons under the  
Programs main menu to check your  
Gmail account, post your video  
watching habits to Gomiso, or  
download extra fan generated  
artwork from thetvdb.com and  
themoviedb.org. Combine XBMC  
with the Transmission bittorrent  
client and Flexget, and you can  
script the download of a lot of  
content.

The only thing left is to put out  
the food, crank up the volume, and  
party.

## Important Links:

<http://www.xbmc.org/>  
[http://wiki.xbmc.org/index.php?title=HOW-TO:Install\\_XBMC\\_on\\_Ubuntu/](http://wiki.xbmc.org/index.php?title=HOW-TO:Install_XBMC_on_Ubuntu/)  
<http://www.themoviedb.org/>  
<http://www.thetvdb.com/>



Charles.....



# CLOSING WINDOWS Control Panel / Device Manager

Written by:

Ronnie Tucker (KDE)

Jan Mussche (Gnome)

Elizabeth Krumbach (XFCE)

Mark Boyajian (LXDE)

David Tigre (Unity)

This month, we'll discuss the moving, copying, and renaming of files. We'll also take a quick look at how to delete a file, and (should a mistake occur) undeleting (or restoring) a deleted file.

## Moving / Copying A File

First, a quick distinction: moving a file will physically shift that file/folder to another place. Copying will place a copy of the file/folder in another place, but keep the original where it is.

### Windows

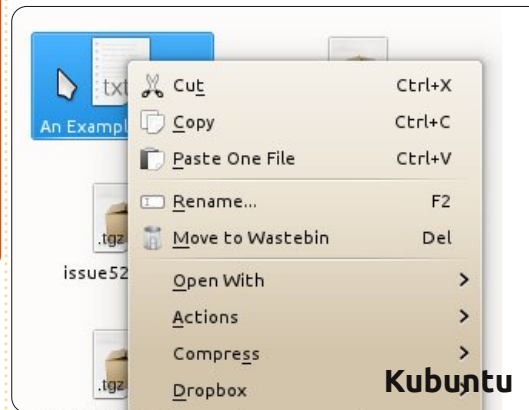
You can move/copy a file in several different ways. The first is by selecting (left-clicking) on the file/folder and choosing 'Move To...' or 'Copy To...' from the Edit menu in the main menu bar. To put the file

somewhere, you navigate to the location using the "Move Items" or "Copy Items" window, and click the 'Move' or 'Copy' button, respectively. Kubuntu does this in a similar way.

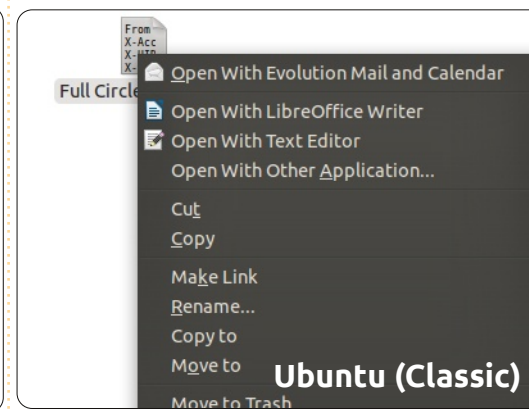
### Kubuntu

Right-clicking a file(s) or folder(s) reveals a pop-up menu with all file-handling options.

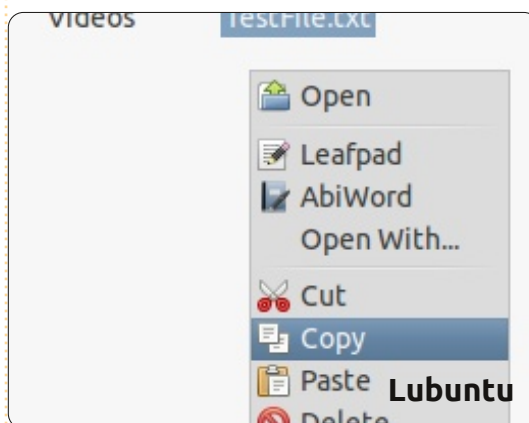
You can also move/copy a file by dragging and dropping it from window to window. Windows XP requires you to hold down the Control-key while you release the left button to move a file/folder. Simply dragging a file/folder to another location will copy the file. Kubuntu does this too, but it also has a unique feature in that, when you drop the file with no keys pressed, a menu will pop up asking you if you want to move/copy the file.



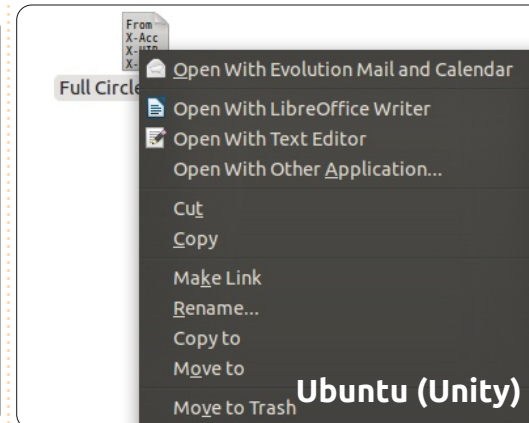
Kubuntu



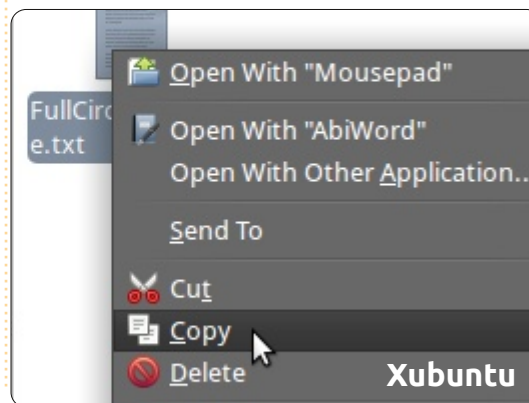
Ubuntu (Classic)



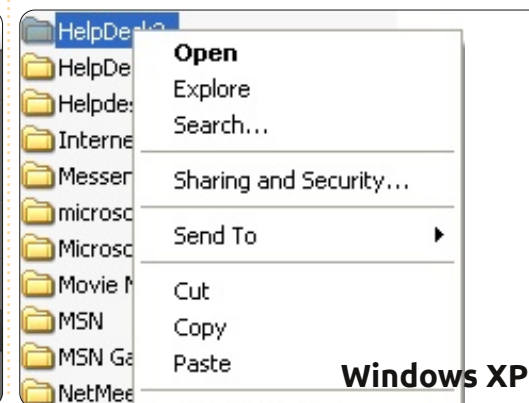
Lubuntu



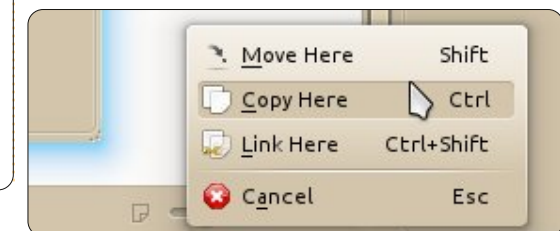
Ubuntu (Unity)



Xubuntu



Windows XP



## Gnome-Shell

In Gnome, things are more or less the same as in Windows and Kubuntu. The Nautilus file manager uses a menu, available with the right mouse-click, with items like cut and copy. It's also possible to just drag and drop files/folders to their new locations. Whether the file/folder is moved or copied depends on the use of the Shift or Control-key, or on the source and destination locations:

- If the source and destination is on the same disk-partition, then dragging and dropping a file/folder will move it, the original file/folder is no longer in its original location.
- If they are on two different partitions, or disks, then a copy will be made. This is visible by means of a little plus sign on the hand that drags the file/folder.

## Unity

Ubuntu has based Unity on Gnome Shell—Gnome 3.x is the base system—so things are done in much the same manner. Unity, like Gnome Shell, uses Nautilus as the file manager, so, to move a file, you can right-click on the file and select 'Cut'. Now navigate to the location you want to place the file, and

right-click in the white-space of the folder and select 'Paste'. To copy a file, use the same method as before, but, instead, click 'Copy' on the original file. You can also use the drag/drop method. As in Gnome Shell, you should remember that if the file/folder is located on the same partition, the file will be moved by default, and, if it is on different partitions, it will be copied.

## Lubuntu

Lubuntu is similar, but with some minor differences. When you select a file(s) or folder(s) and then right-click, a context menu is revealed with the "usual" file handling options, though there is no "Move" option in this menu.

To "Move" a file/folder using this menu, you first have to "Cut" the file, then navigate to the destination and "Paste" it; however, the File Manager Edit menu does provide "Move To..." and "Copy To..." options which function as described above for MS Windows.

## Xubuntu

In Xubuntu, when you click on a file and drag it to another Thunar

File Manager window, it will move the file, and holding down "Shift" when you click and drag the file will do the same. If you wish to copy the file, you can right click on the filename and select "Copy", and in the new directory you'll right click, and select "Paste" to paste the copied file.

## Renaming A File

In all variants, this is done by right-clicking the file you want to rename, and choosing 'Rename'.

Gnome, KDE, and LXDE all have a nice renaming feature, which is, that after right-clicking the file and choosing 'Rename', only the file-name is selected, you'll see that the file-extension (if present) is not selected. So, when you want to rename a picture from your camera (IMG\_0001.JPG) into House-on-the-beach.JPG, you can just start typing without worrying about accidentally changing the file-extension as it will not be deleted or renamed: a JPG will still be a JPG. This is different from Windows where you have to be careful not to erase the file extension.

## Deleting A File

A file that is deleted is not gone forever—it's sitting in a special place where the file can be restored. The only time a deleted file can not be restored is when the Waste-bin (or equivalent) is emptied. After the Waste-bin is emptied the file is gone forever.

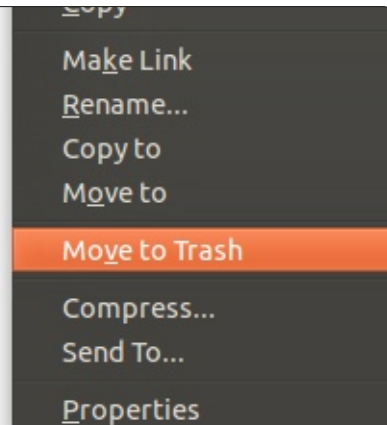
## Windows

Deleting a file is, like renaming, done using the right-click menu mentioned earlier. Or, you can drag a file/folder to the 'Trash Can' icon that's on your XP desktop.

## Kubuntu

Kubuntu has no desktop icon for its 'Waste-bin.' However, there is a Trash Can directory that is displayed by default in the File Manager, and any file(s)/folder(s) can be dragged to it for "disposal". Likewise, any files/folders that are deleted (either from the menu or by pressing the Delete key on the keyboard) are placed in the Trash Can by default, but you can still right-click a file to choose Delete, or use the 'Add Widget' item (by right-clicking on the





Ubuntu (Classic)

desktop/taskbar) to add a Waste-bin icon.

## Gnome-Shell

Gnome-Shell has a Waste-bin, called Trash, on the right side of the lower panel. All the normal ways of deleting a file work here: Del on keyboard, right-click and select Move to Trash, dragging the file to the Trash-bin.

Another option (similar to the Unity notes below re adding Delete to the right-click menu) is the key combination Shift-Delete. This bypasses the Trash, and, once confirmed, the file will be gone for ever. So be very careful using this.

## Unity

In Unity, there is a Trash icon in the bottom left-hand corner of the dock. You can delete files in a couple of different ways. In the file manager, there is a Trash folder on the left-hand side. You can click a file and drag it in to the Trash folder, or drag it to the 'Trash' icon on the dock. Also, you can right-click on it and select 'Move to Trash'. You may also want to look in the preferences in the file manager (Nautilus), you can select Edit >

Preferences, and, under the the 'Behavior' tab at the very bottom is a check-mark to add a 'Delete' option to the right click menu that will remove the file completely - bypassing the Trash. You will not be able to recover this file by restoring it from the Trash, so be very careful if using this option.

## Lubuntu

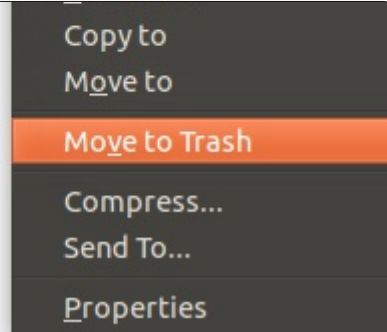
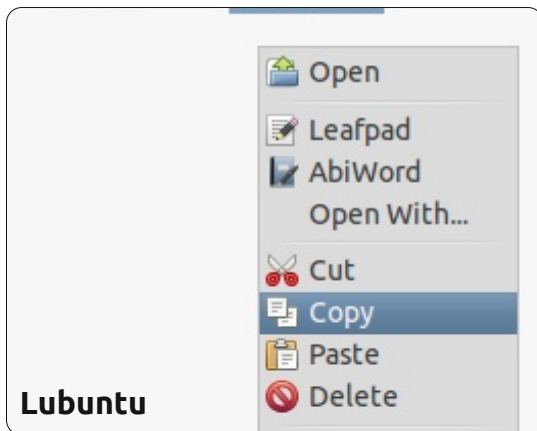
Lubuntu also has no "Trash Can" icon on the desktop; but has a Trash folder that is always visible in the File Manager. Right-clicking the Trash folder opens one menu option: "Empty Trash". You can also select specific files/folders in the Trash and permanently delete them—by showing the pop-up menu (right-click) and selecting Delete.

## Xubuntu

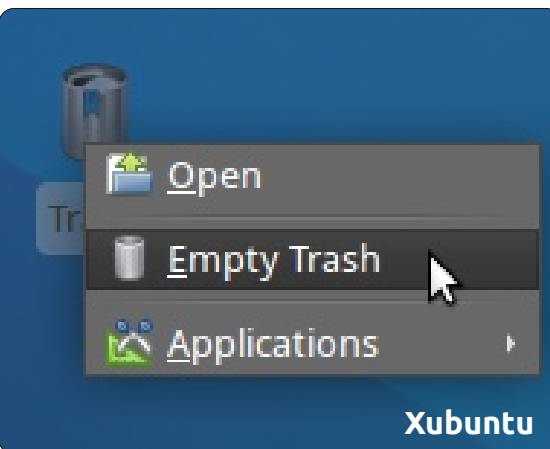
Xubuntu also has a Waste-bin called Trash; it is located on the Desktop and also in the right-hand side of the bottom panel by default.

## Restoring A File

## Kubuntu



Ubuntu (Unity)



Xubuntu



Kubuntu

If the waste-bin has not been emptied, you can click its icon/name and view the contents

Gnome-Shell

In Gnome you can do the same as in KDE, or, after selecting the file(s)/folder(s) you want to restore, click the button “Restore selected items” on top of the frame.

Unity

Unity works in the same way as Gnome Shell and KDE. Open the Trash, right-click on the file, and click ‘Restore’, or you can click the ‘Restore Selected Items’ button.

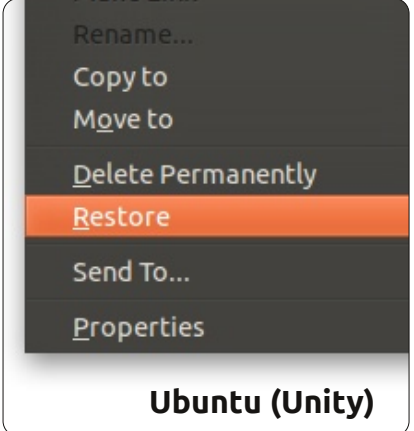
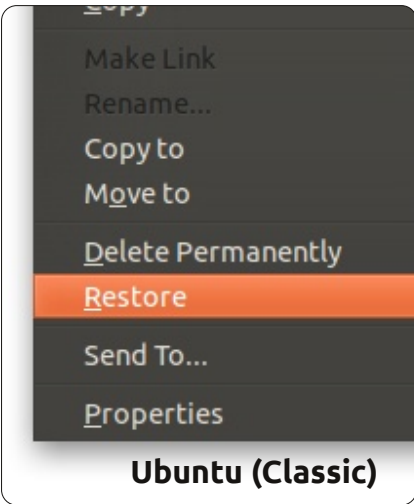
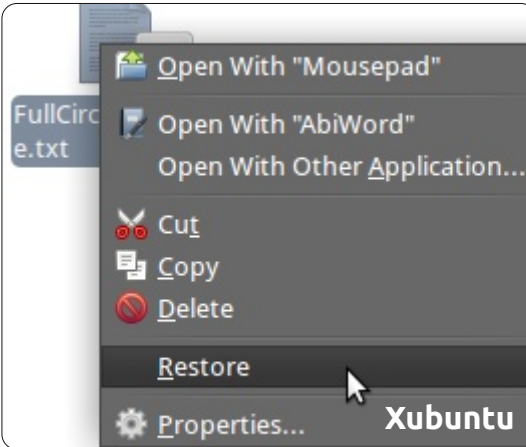
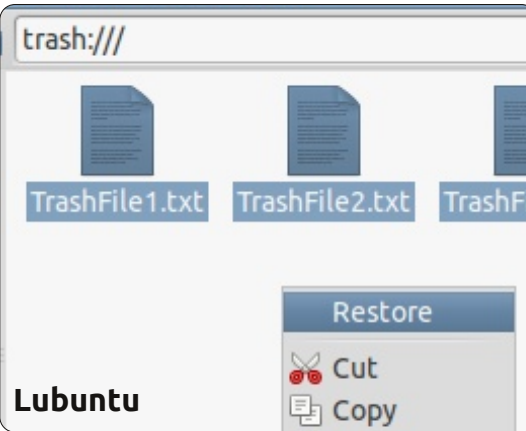
Lubuntu

You can either drag and drop the file back to somewhere, or right-click it and choose to ‘Restore’ it.

Xubuntu

In Xubuntu, you do the same as in Kubuntu, a “Restore” option is in the right-click menu.

Next month we’ll look at network and wifi controls.



SUDOKU

Numbers 1 to 9 are to be filled into the 9x9 grid so that every row, every column, and every 3x3 box contains the numbers 1 through 9.

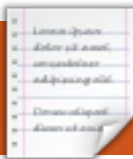
EASY

					6			
					8	2		
7	2			1			4	
		9	5	3				2
8		2	4	7	9	5		6
1				8	2	4		
	5			2			7	9
		4	1					
			8					

HARD

		3		2	7			5
4								
	2	7						
	7			4		6	1	
6		2	5	7	3	8		4
9	4		1				7	
					4	3		
							8	
2			3	9		7		

Solutions are on the second last page.



# MY STORY

Written by Maurice Knopp

## A Penguin In The Office?

I first got in touch with Ubuntu out of curiosity (and lack of Windows licenses) in 2005 with the 5.04 Hoary Hedgehog release. I installed it on my mother's old Pentium III – 600 MHz. In the following weeks, Ubuntu began to emerge as my primary operating system, and I finally installed it on my own machine.

### Penguin in the Office – Why would one do that?

In 2007, I worked for a large media company located in Luxembourg to develop a software component which can process video signals and feed it to the video encoder ffmpeg. The final system should be run on a Linux server due to issues of stability, reliability, and cost savings. So, for development ease, I began to use the Linux machine I was developing on for day-to-day office tasks as well. It was the time of Feisty Fawn (7.04) and Gutsy Gibbon (7.10). So, I was keen enough to install a Linux desktop machine within a company which had around 450 Windows XP

boxes, Windows infrastructure, and Windows people all around, with zero Linux office usage.

In summer 2010, I started working for a large publishing house in Germany - heavily focused on Java development around a content management system. To my surprise, the whole dev team already used Ubuntu when I arrived. Why do you do that? *"Speed! We can't bear Vista...."* Now, I've been using Ubuntu since day one for development and office tasks, and I'm happy with it ever since.

### Setup of your box

Back in 2007, I chose the 32-bit version (x86) for installation on the desktop machine because, back then, you encountered far less problems, especially with browser plugins such as Adobe flash. Today, these kinds of issues are mostly solved, and I would recommend installing the 64-bit version (x86\_64) on any computer which is not older than three years and has a 64-bit processor.

Once installed, in a couple of minutes, you can install most of the software you'll ever need from the "Ubuntu Software Center" (used to be called "Synaptic") which is based on the integrated package management system. E-Mail Client(s), Browser(s), and Instant Messaging software is already installed out of the box.

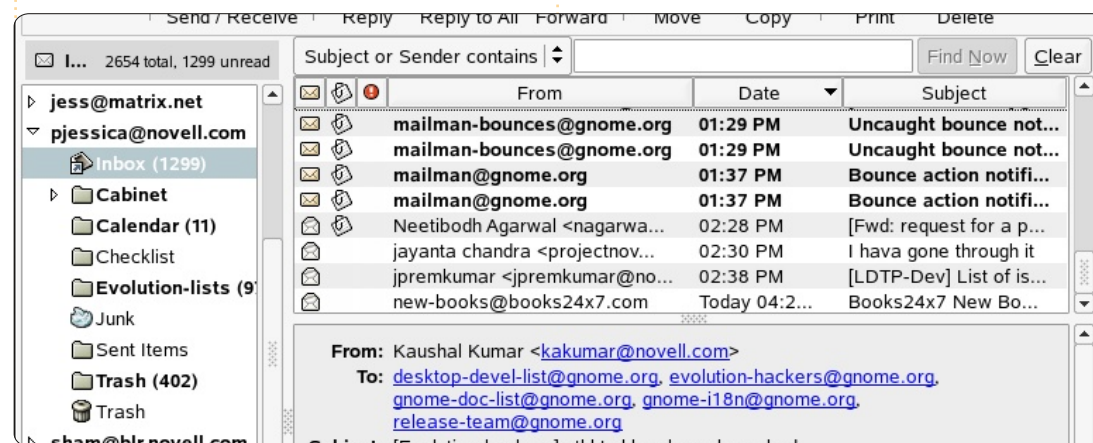
For the Pros: Just search all of the software you want to install, and save the package list to a text file. You can now install any amount of fresh machines and issue the command "sudo apt-get install <loooong list of packages, space separated>". This way, you kind of "clone" your setup multiple

times. Compare this to browsing the web, downloading several software (components) from several websites, and manually installing several setup.exe's, leading to several reboots.... Yeah, I know you can script Windows installations as well, but, in my opinion, you'll have to put in far more effort.

### Office work

#### Mail

So, let's get to integration of your fresh box into the Windows network. Like most companies, the ones I work(ed) for used the famous MS Exchange Server - in





connection with the Outlook Client for mail exchange and scheduling tasks. I've read that Evolution, which is installed out of the box (only on Ubuntu versions prior to 11.10, but it may be installed manually in later versions), also can handle Exchange servers. This is exactly what I needed! So I searched the web and found a German tutorial (<http://www.msexchangefaq.de/clients/evolution.htm>) which explains the necessary steps to configure Evolution with Exchange Server. The Novell documentation for Evolution may also be a good source for help on this topic (<http://www.novell.com/documentation/nld/index.html?page=/documentation/nld/evolution/data/front.html>). I managed to successfully get Evolution running on my existing Exchange 2003 mail account.

However, I've done some web research, and I was not able to get Exchange 2007 and above working even with the most recent version of Evolution. I now use the IMAP support built into Exchange Server to send and receive mails, which works quite well. You might have to ask your administrators to enable IMAP on Exchange Server. I receive

a LOT of mail per day, and otherwise I had to answer the whole bunch over the Exchange Web Interface known as "Outlook Web Access". Though being able to connect to my mail account, I didn't quite figure out how to access the address book. That's sad, but I have the habit of just "replying" to whoever wrote me. So, I can live without the exchange address book and build up my own local one, but it would be nice if I could figure out how to configure this one day.

One drawback occurred in the course of the last Ubuntu update. Before 11.10, Oneiric Ocelot, I was able to accept or decline meeting requests from within Evolution, which then would automatically put the appointments into my calendar. This feature seems to be broken with 11.10, so I have to log into the Outlook web interface to reply and to do scheduling.

### Shared Folders

Next thing, most companies have a BIG shared network drive in the office. Every file which is related to a running project or is of public interest, will just get dumped on the network drive in some folder. All Windows machines

can access this drive, and read or create their own files. So, as one can imagine, it was very important to me to get access to this drive and continue working on the shared files. I tried to determine the IP of the file server machine and access it from nautilus by pressing CTRL+L and entering `smb://xxx.xxx.xxx.xxx` where `xxx.xxx.xxx.xxx` is the IP of the file-machine. In the popup mask, just enter your Windows-login credentials. You should see all shared folders on the machine, and just have to right-click on the desired folder and choose "connect to this server" from the context-menu. DONE! The folder is added to your favorite bar on the left, and, from all nautilus instances, you can now access the shared folder as easy as your home or any other folder! Hey, that's even cooler than navigating to "My Computer" on the desktop and then chose your shared network drive or searching the "Network Neighborhood".

When pushing or pulling files from Apple machines, I tend to use the command line utilities. SSH to connect to a remote machine (apple or linux), or SCP to push or pull files to or from a remote fruit

flavored box.

Also, most recent cloud storage companies like "Dropbox", with clients for all major OSs, started gaining ground and becoming more and more popular. We're using Dropbox with clients for Windows, mac, and Linux, without problems.

## Office

Interoperability between MS Office and OpenOffice / NeoOffice (OO / NO) has been very important to me because I regularly get these kinds of documents. So, it is necessary for the Windows guys that I stick to their format (\*.doc or \*.xls). I guess, for all people who want to do some collaborative work, the point of compatibility is one of the most important ones. As far as I can tell, there were no real problems concerning reading and writing files in the proprietary MS document formats. I have to admit that the most complex documents that I tested contained a maximum of thirty pages with a few images and some tables. So, compatibility may become worse if you have to create more complex documents.

# MY STORY - A PENGUIN IN THE OFFICE

The functions of OO / NO cover all the needs I had so far. Create documents with a table of contents, footmarks, (floating) images, ..... I did not miss any function in OO / NO that I knew from MS Office. The only thing that is lightyears ahead in MS Office is the spell checker, which is really helpful.

## Printer

This has been no real issue at all. Once I had correctly determined the IP and the model of my office network printer, I had no real problems in printing large documents. Professional office printers mostly support Postscript drivers and should therefore be

compatible. Anyway, you might not see all available options and capabilities of your printer within the printing dialogue because of driver limitations. For me, this was not a real problem but I'd like also to point out that I don't print out very much.

## Miscellaneous

There might be some other tasks you have to do today with your Windows box like updating software. This is just a breeze with Ubuntu's update mechanism, and a great time saver.

Instant messaging, like I said before, comes out of the box with ad-free versions capable of using

all of the major IM-networks. You can even install Skype with one click in the Ubuntu software center. I tend to use Jabber.

Back in 2007, I had to install the graphics driver by myself on my workstation computers. In the latest version of Ubuntu you only have to choose the proprietary graphics driver for ATI or NVIDIA, do a reboot, and everything should be working fine.

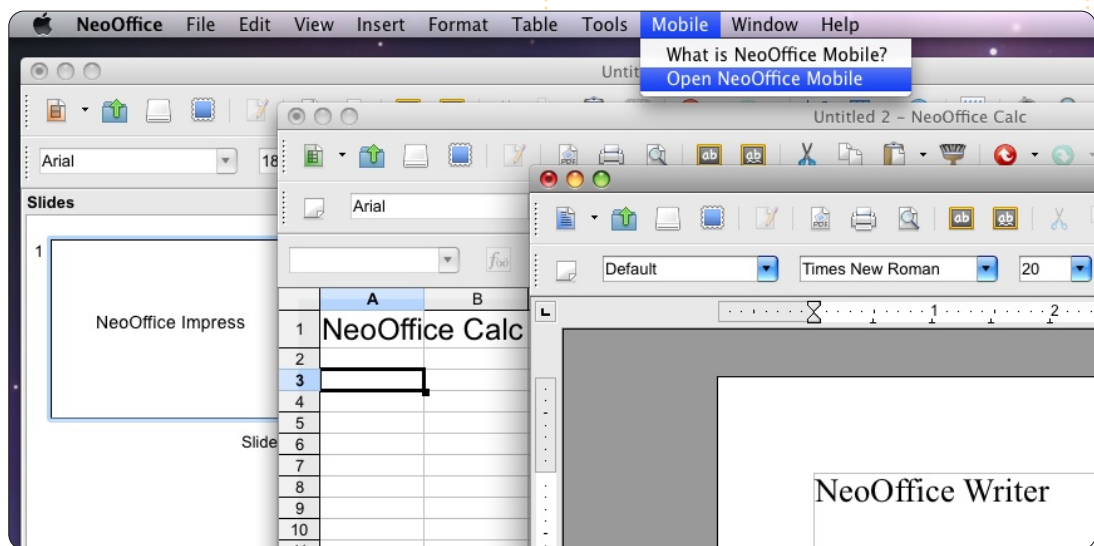
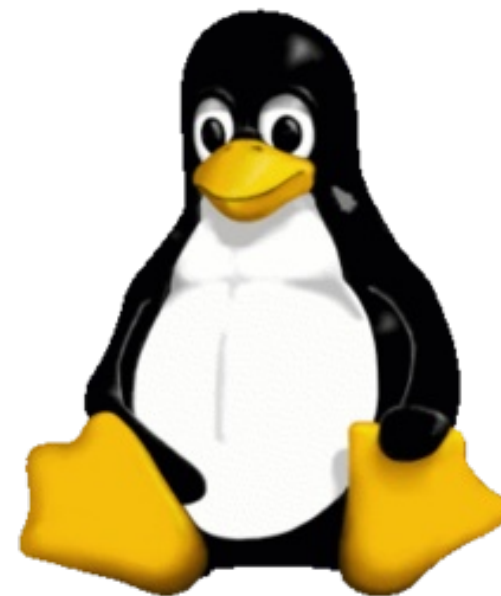
I listen to music, burn DVDs / CDs, and use a dual monitor configuration with no driver problems. This was different when I started using Ubuntu back in 2005.

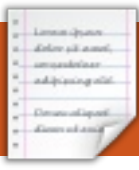
## Conclusion

Ubuntu is mature enough to be used in most office environments! Unless you use Microsoft Outlook extensively with all advanced features, or you have to use "just this" program which doesn't have a Linux version, you can try to set up a Linux office box. I recommend using an old machine side by side (if your company allows), and to do more and more tasks on the Linux machine. You will benefit in terms

of knowledge and getting to know another software world. Running an entire office box based on Linux is possible.

I would be very interested in your thoughts, just drop me email at [mak@maknesium.de](mailto:mak@maknesium.de) You might also want to visit my site [www.maknesium.de](http://www.maknesium.de) (partly English / German).





# MY OPINION

Written by David Bissett

I have used Linux as my main operating system for over a year now. I have tried various flavours over the years - OpenSuse and Mandriva, for example - before settling on Ubuntu. The reason for this choice was mainly based on the relative stability (in my limited experience at the time of making the choice), available support via many online forums, and ease of use for the average user. Unfortunately, I still have a need for some Windows applications, so, though I do use one or two in Wine, I also have Windows XP in a virtual machine on my main desktop. Most applications used on a daily basis are, however, native Linux. The main desktop machine, a self-build, runs Ubuntu; a second, lower spec, machine operates with Xubuntu; while the laptop used by my wife has the Ubuntu variant, Linux Mint.

Linux installs easily, and it can be argued that if the main use is going to be Internet, email, music, with a bit of office-like work, then a machine loaded with a flavour of Linux would be a better choice for

most people than Windows. This does not, however, mean there are no problems.

Some of these problems centre around the thing that is often held up as a virtue - choice. Perhaps one of the biggest choices is the flavour of Linux to use - Debian-based with deb installable packages, or Red Hat with rpm packages. That isn't the end, though, as it is then necessary to choose the desktop to use. This is more than simply choosing the look - as many applications have been developed specifically for one desktop or the other. Usually, they will work in any Linux environment.

This leads on to the chosen applications. I've been trying Chrome, Chromium, and Opera. LibreOffice has taken the place of OpenOffice, and I have just started using Tweetdeck in Google Chrome. For photos, there is only one choice - Digikam. I have tried Shotwell, which is OK, but I won't use it until it is possible to order the photos the way Digikam does. Digikam works OK under Gnome

and Unity, but undoubtedly works better under KDE, and is the main reason I have considered KDE as a desktop.

Banshee is the app used for music and podcasts, a Gnome application. This does everything needed. Neither Amarok nor Rhythmbox cover everything needed in the way Banshee does, so there is no real choice.

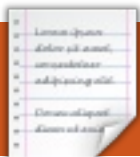
There are some other, more subtle differences between KDE and Gnome (when considering these differences, many comments made about Gnome also apply to Unity. It should also be noted that this is referring to Gnome 3.x). Gnome remembers the state of the num lock key, which is really useful as I frequently use the number key pad section of the keyboard. In my experience, KDE doesn't do this. Using a USB headset is also extremely easy under Gnome as you can easily switch between the speakers and headset with a couple of clicks of the mouse (this isn't even very easy in Windows, at least XP). While this may be possible in

KDE, it isn't very easy or intuitive. Simply plugging the headset in doesn't work in my experience, the use of a USB headset is rather hit or miss, but excellent in Gnome and Unity.

It has to be admitted that KDE looks great, and would be preferred if only Gnome applications would respond as well in this environment as they do under Gnome, and the couple of significant niggles above were addressed. As it is, the only viable option for me is to go for Gnome or Unity, and switch to KDE when I think it might be preferable.

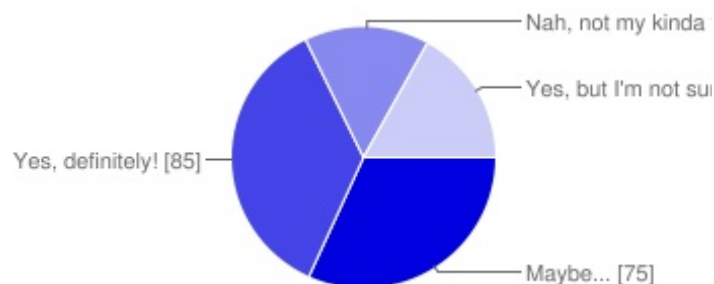
Linux is a great platform, and the various versions of Ubuntu are great implementations, but, if greater take-up is to be encouraged, there should be more consideration of the non-expert user - remember, users aren't necessarily interested in tinkering under the bonnet. It would also benefit the cause if there was greater collaboration between the major desktops to ensure better cross-compatibility.





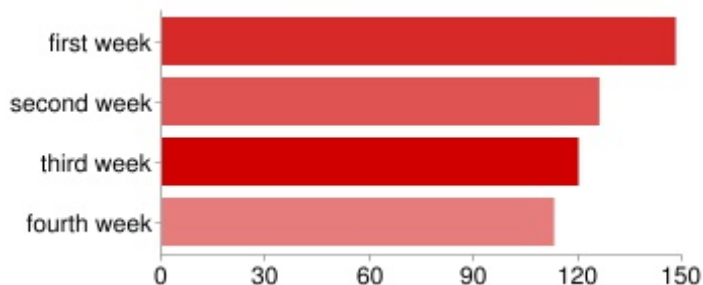
# I THINK...

Last month's question was:  
**Would you join us (FCM) on IRC for a meeting once a month?**



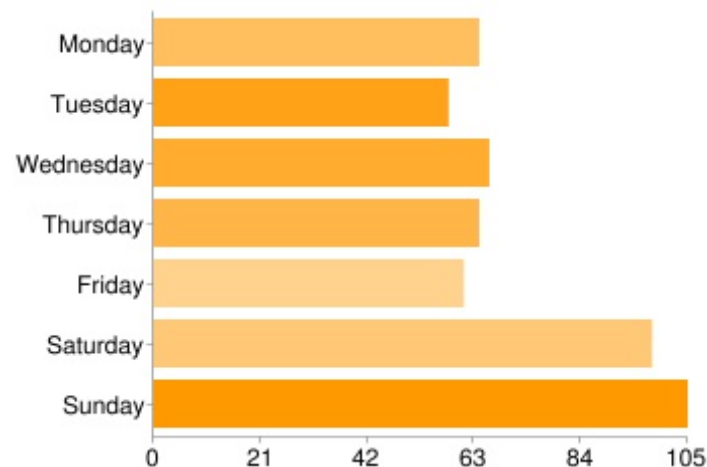
## Would you join us (FCM) on IRC for a meeting once a month?

Maybe...	32%
Yes, definitely!	36%
Nah, not my kinda thing	15%
Yes, but I'm not sure...	17%



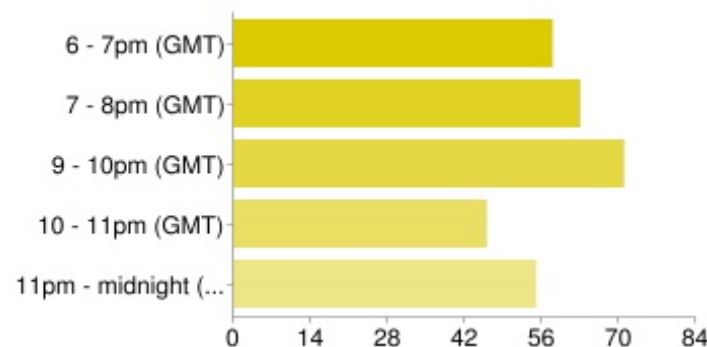
## And which week of the month suits you?

first week	79%
second week	67%
third week	64%
fourth week	60%



## Which day suits you best?

Monday	34%
Tuesday	30%
Wednesday	35%
Thursday	34%
Friday	32%
Saturday	52%
Sunday	56%



## And which times (in GMT) suit you best?

6 - 7pm (GMT)	32%
7 - 8pm (GMT)	35%
9 - 10pm (GMT)	40%
10 - 11pm (GMT)	26%
11pm - 12 (GMT)	31%

- || What is IRC ? And how can I join it ? [see this month's HowTo - Ed]
- || Well, why not? FCM might find my writing skills impressive and useful.
- || Would love to interact with the FCM Commune...
- || Will we be able to discuss Linux questions, or only questions related to the magazine? [anything! - Ed]
- || I hope it isn't just for experts. [I hope not, I'm no expert! - Ed]
- || I like the idea... we all run diff distro's, so better feedback on those from users.
- || Not sure what the purpose would be, but it sounds cool.
- || Don't know that I could contribute but I'd sure listen in, so to speak!
- || Let me know what time is decided upon. [read on - Ed]
- || What does an IRC chat allow that can't be found in, say, sending suggestions by email? [real-time feedback - Ed]
- || Could the sessions be archived, especially for those in Western USA & Canada? [I'll get the chat logs posted to our wiki page - Ed]

This month we have a short questionnaire sponsored by **SpiderOak**. By entering you could win 100GB of space on SpiderOak. The questions are at: <http://goo.gl/ewc1O>. If you do not wish to enter the competition simply leave the email box blank.

Alternatively, post a message on Twitter with the hashtag **#IwantSpiderOak**, or you can reply to our SpiderOak post on our Facebook page at: <http://www.facebook.com/fullcirclemagazine>. We'll choose one winner from Twitter, one from Facebook, and three from the questionnaire.

**Competition closes on Friday 20th January 2012**, and the winners will be announced in **FCM#57**. **Good luck!**

## A PLEA ON BEHALF OF THE PODCAST PARTY

As you often hear in the podcast, we're calling for opinion topics for that section of the show.

Instead of us having a rant about whatever strikes us, why not prompt us with a topic and watch for the mushroom clouds over the horizon! It's highly unlikely that the three of us will agree.

Or, an even more radical thought, send us an opinion by way of a contribution!

You can post comments and opinions on the podcast page at [fullcirclemagazine.org](http://fullcirclemagazine.org), in our Ubuntu Forums section, or email [podcast@fullcirclemagazine.org](mailto:podcast@fullcirclemagazine.org). You can also send us a comment by recording an audio clip of no more than 30 seconds and sending it to the same address. **Comments and audio may be edited for length. Please remember this is a family-friendly show.**

It would be great to have contributors come on the show and express an opinion in person.

**Robin**





# MORE UBUNTU!

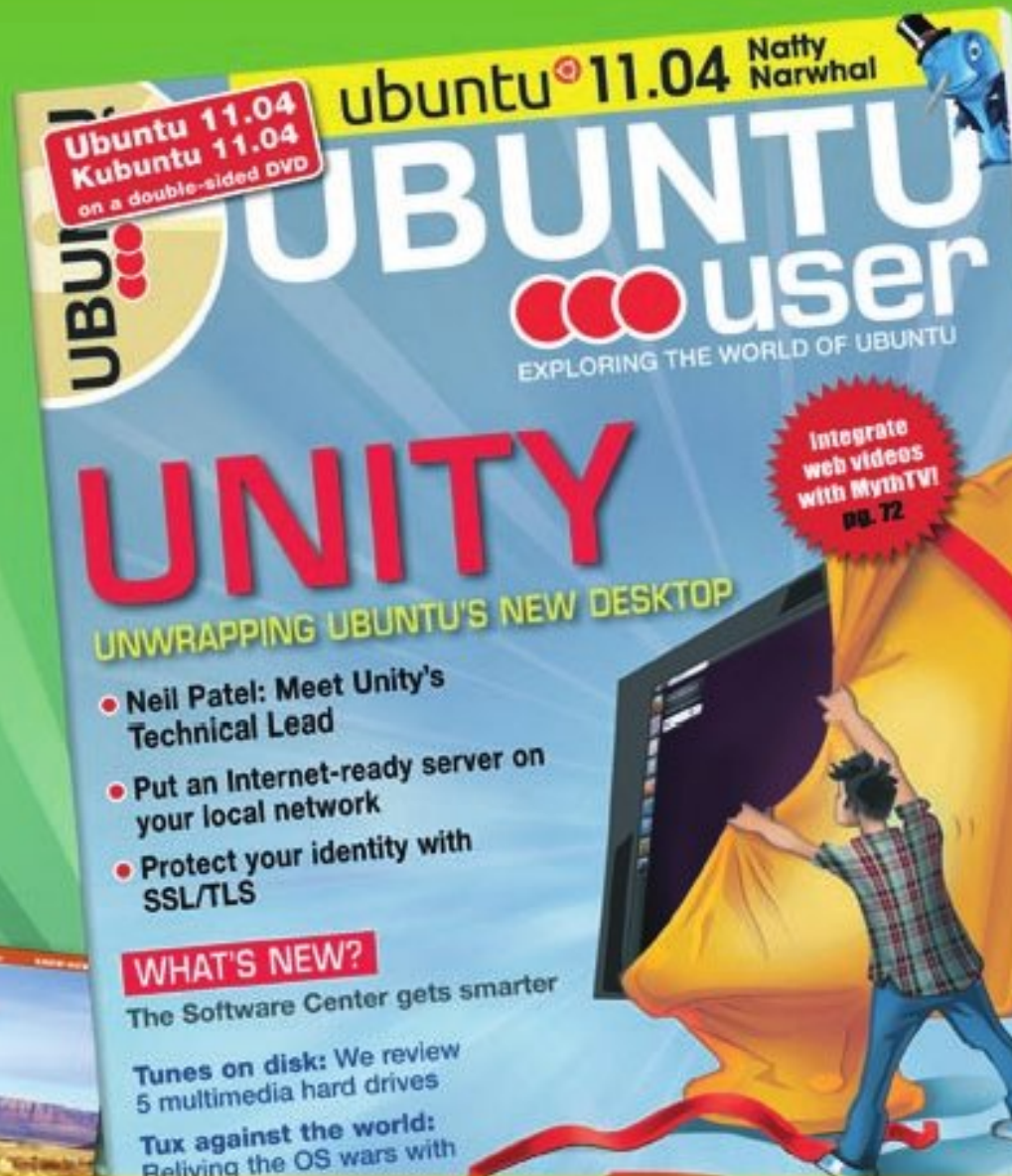
Can't get enough Ubuntu?  
We've got a whole lot more!

**Ubuntu User** is your roadmap to the Ubuntu community. In the pages of **Ubuntu User**, you'll learn about the latest tools, best tricks, and newest developments in the Ubuntu story.

**DON'T MISS ANOTHER ISSUE!**



**UBUNTU-USER.COM/SUBSCRIBE-NOW**



FOLLOW US ON

TWITTER: UBUNTUSER

FACEBOOK: UBUNTUSERMAG





# REVIEW

Written by Robin Catling

## Puppy Linux

**P**uppy Linux was designed as one of those small, light-weight, Linux distributions, intended primarily for lower specification hardware - whilst still providing a full suite of applications and utilities for a usable desktop environment. Frugal with resources, it was blindingly quick.

Lucid Puppy 5.2.5 is not the latest release, dating from April 2, 2011 (the latest, 5.2.8, may be a little too bleeding edge for really old kit). The download is a 126MB .ISO image file - which I decided was worth a road-test on an otherwise obsolete AMD chip-and-main-board combination from 1999.

Puppy Linux 5.2.5 is based primarily on Ubuntu 10.04 LTS "Lucid Lynx," but there's a mixture of utilities provided using the 'Woof' build system, such as a later version of the e2fsprogs file-system utilities from Ubuntu 11.04 "Natty Narwhal." Puppy 5.2.5 uses version 2.6.33.2 of the Linux kernel, and, thanks to that build system,

Woof, it can take binaries of other popular distributions and incorporate them into new Puppy releases, among them many components from Ubuntu such as shared libraries and some applications. This may have something to do with Puppy rising to number 9 in the Linux chart on Distrowatch. Compatibility with Ubuntu packages notwithstanding,

the spirit of the Puppy remains independent.

Puppy is bootable from just about any media, including LiveCDs, zip disks, USB drives, and hard drives. It does a reasonable job of automatically detecting most hardware. However, be wary of installing on Ext4 formatted partitions. Ext4 is not fully

supported in Puppy, as the bug lists show.

Puppy's small size makes it a good candidate to install onto USB memory sticks, with the ability to save any personalized settings and installed software. At boot-time, Puppy loads into RAM, which frees up the boot device for other uses, and makes for a very fast system. On most systems, in fact, boot time is just 30 to 40 seconds, even on my old Pentium-II clone.

The pragmatic mish-mash of Puppy's interface and tools helps provide the high performance. Puppy uses JWM and OpenBox with FBPanel, all known for their minimal resource requirements. Many of the tools are console-based or have very simple 1990's style low-res control decks. They are easy to use, but it does feel like a step back in time.

Otherwise, Puppy ships with lots of smaller but useful applications for a light-weight but functional desktop. There's the Gnumeric spreadsheet, Osmo



## REVIEW: PUPPY LINUX

personal organizer, HomeBank money management, Abiword, and a selection of applications for photo and image management, text editors, and media player. Slypheed is the default mail client and Dillo the browser. See what I mean? Step back in time.

Using the JWM Windows Manager, the desktop is a riot of colorful, Fisher-Price style icons. The standard start-up sound is a friendly bark. More themes are available, and more programs are

available through the Puppy Package Manager or using the QuickPet alternative package manager.

If you don't find what you want in the Lucid Puppy repository, the Ubuntu repositories can be used with one tick-box. QuickPet provides a one-click alternative to install programs such as Firefox, Pidgin, and LibreOffice, although the performance of these was tardy to say the least. I haven't persuaded Open Office Writer to

run at all on my two test-beds.

The miracle of Puppy is that it resurrected an old Pentium-II era AMD-based machine with only 256Mb of memory. Desktop performance was good, when the equivalent Ubuntu live CD's for 11.04, 10.10 and 10.04 failed to run, owing to modern kernel constraints, much less install locally. The screen-shot is of that machine happily running Puppy, and much faster than it ran Windows XP.

Where it surprisingly failed is in Virtualbox, where the Puppy Live CD managed to run badly, and install to a virtual disk a version which still won't boot despite much remedial work.

Puppy remains a bit of a mixed bag. I could run it on current hardware - but I'm not sure I'd want to suggest it as an alternative to anyone but a bold tinkerer familiar with Linux distributions; as a fall-back on old kit, you can do worse than take the Puppy for a walk. Ouch. Sorry.

Puppy Linux official home page:

<http://puppylinux.com/>

Puppy Linux official wiki:

<http://puppylinux.org/wikka/HomePage>



puppy  
Linux



## Correction

In the HowTo article by Jesse Aviles, "Ubuntu For Business & Education – Pt. 3" (Full Circle issue 54, page19), the RPN expressions appear to me to be incorrect, at least when I check them on my HP 12c.

The operators used in the expressions are binary operators, using two inputs (not three) from the stack. For the multiplication operations, they must be done twice to obtain the correct answers:

$$15 \ 5 \div 7 + 20 \ 3 \times \times = 600$$

$$15 \ 5 \div 20 \ 3 \times \times 7 + = 187$$

I checked the Wiki reference, which confirms this binary nature of the operators.

**Edward Owen**

## Mint Menu

I find that some of the strange problems that I've complained about are related to oddities with the Mint menu app. I sure hope that they fix them with Mint 12!

That may well be the source of the problem that LeRoux (FCM#52) mentioned with Office on Wine/Mint 11. If that's the case, he should be able to manually build a shortcut by navigating to the .exe file (it should run from there), and working backwards. I know that the Wine shortcuts do work under Xfce.

Oh, and the login app GDM(?) is hardwired to right handed mice - the source of one of my complaints. I've requested a fix from the developer's list.

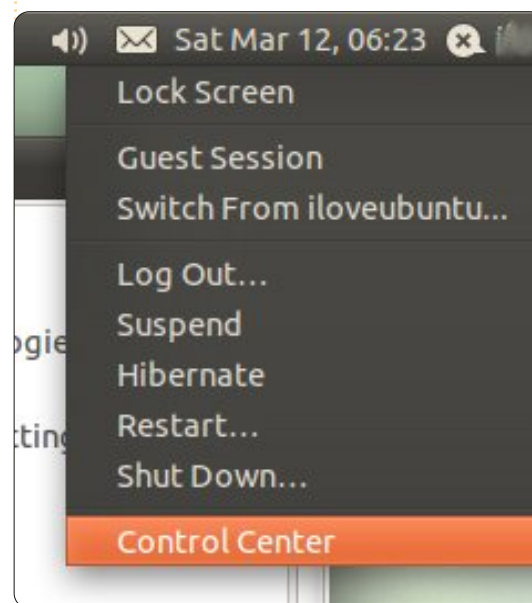
**David O. Rowell**

## Closing Windows

Re: Ubuntu Control Center.  
*"In Ubuntu (Gnome), it's called Control Center, and in Natty it is installed - but it does not show up in the menus."*

I can see it in 11.10; look on the top bar on the extreme right in the pull-down where you log off. It is the first item.

**Andrew Ampers Taylor**



## Join us on:



[goo.gl/FRTMI](https://goo.gl/FRTMI)



[facebook.com/fullcirclemagazine](https://facebook.com/fullcirclemagazine)



[twitter.com/#!/fullcirclemag](https://twitter.com/#!/fullcirclemag)



[linkedin.com/company/full-circle-magazine](https://linkedin.com/company/full-circle-magazine)



[ubuntuforums.org/forumdisplay.php?f=270](https://ubuntuforums.org/forumdisplay.php?f=270)

## Ubuntu Youth

The other day I came across Tux Math from Tux4kids. It is an educational game which teaches the kids to calculate. The various levels start with learning the numbers, additions up to 10, 20 100, same with subtraction, multiplication, and division. My 7-year-old son really enjoys the game, so I started to look for more.

This brings me to the topic of this email. It would be nice to have a column for kids. Not only with



educational games, but also secure access to the Internet. I remember an article about proxying the Internet access for kids. I will have to check this when the time comes.

I would greatly appreciate such a column, perhaps spontaneously; I'm not looking for this kind of software, but when I read about it I think it could interest my sons.

**Frank Bommeli**

*Thanks for the idea Frank. We used to have an Ubuntu Youth column a couple of years ago, but the writer vanished. Anyone out there want to restart Ubuntu Youth, or start Ubuntu Kids?- Ed.*

## Primary Age

**Y**ou asked what we thought was the average age of Ubuntu users was. On reflection, reading your letters, I would say possibly late primary school age to early secondary school age.

I derive this information from the churlish and petty complaints from people who are totally unable

to grasp a new technology such as Unity.

Now I thought it was people of my age (in my seventies) who were unable to adapt to change and to adapt to new ideas with technology, rather than young children who are supposed to work it out quicker than us old farts?

I took to Unity as a duck takes to water. And, I have had no problems with it. This is perhaps why I find it so difficult to believe the younger amongst us cannot grasp it?

So what does an old geezer like me use Linux for? Not just for browsing the web and writing occasional letters. I use it for running a newspaper in Norf Lunnon.

We use it for writing articles, for editing photographs, and for sorting out our website using the new version of Drupal content management software.

I use 11.10 in my Netbook already, and will change to 11.10 on my business desktop as soon as it rolls out. You just would not believe the number of programs I use on my 64-bit home desktop -

with 8gigs of RAM and three separate 1TB hard drives (two of them external).

**Andrew Ampers Taylor**

## MySQL to SQLite

I am not sure if this is the right place to write to you regarding a comment on one of the articles from Full Circle Magazine, Issue55. The article is called How-To Program in Python - Part 29, written by Greg Walters. He states there: "A little while ago, I was asked to convert a MySQL database to SQLite. Looking around the web for a quick and easy (and free) solution, I found nothing that worked with the current version of MySQL for me."

This is not true. I am a Business Intelligence developer and on a daily bases I use ETL tools. I am working with Pentaho Data Integration Tool (Kettle) CE (Community edition) (<http://kettle.pentaho.com/>). It is a full open source product and it is very mature. It has the ability to transport/transform data from any type of source to any other type of source. The sources can be any

type of Database as well as spreadsheets or XML. Of course MySQL and SQLite are among the options. I am currently using the tool in Ubuntu 11.10 and Windows XP. Maybe at some point I could write a how-to article about ETL-ing.

**Rolland J. Sovarszki**

*Thanks for the info Rolland, I've passed it along to Greg. And, yes, do feel free to write an article about ETL-ing. - Ed*

## LTS

**I**n FCM#54, you quoted PC World as saying, "Precise Pangolin ... will be Ubuntu's fourth Long Term Support (LTS) release, with a full three years of support."

In fact, starting with 12.04, desktop LTS releases will be supported for five years. There are some limitations, though; hardware updates will be for the first two years only.

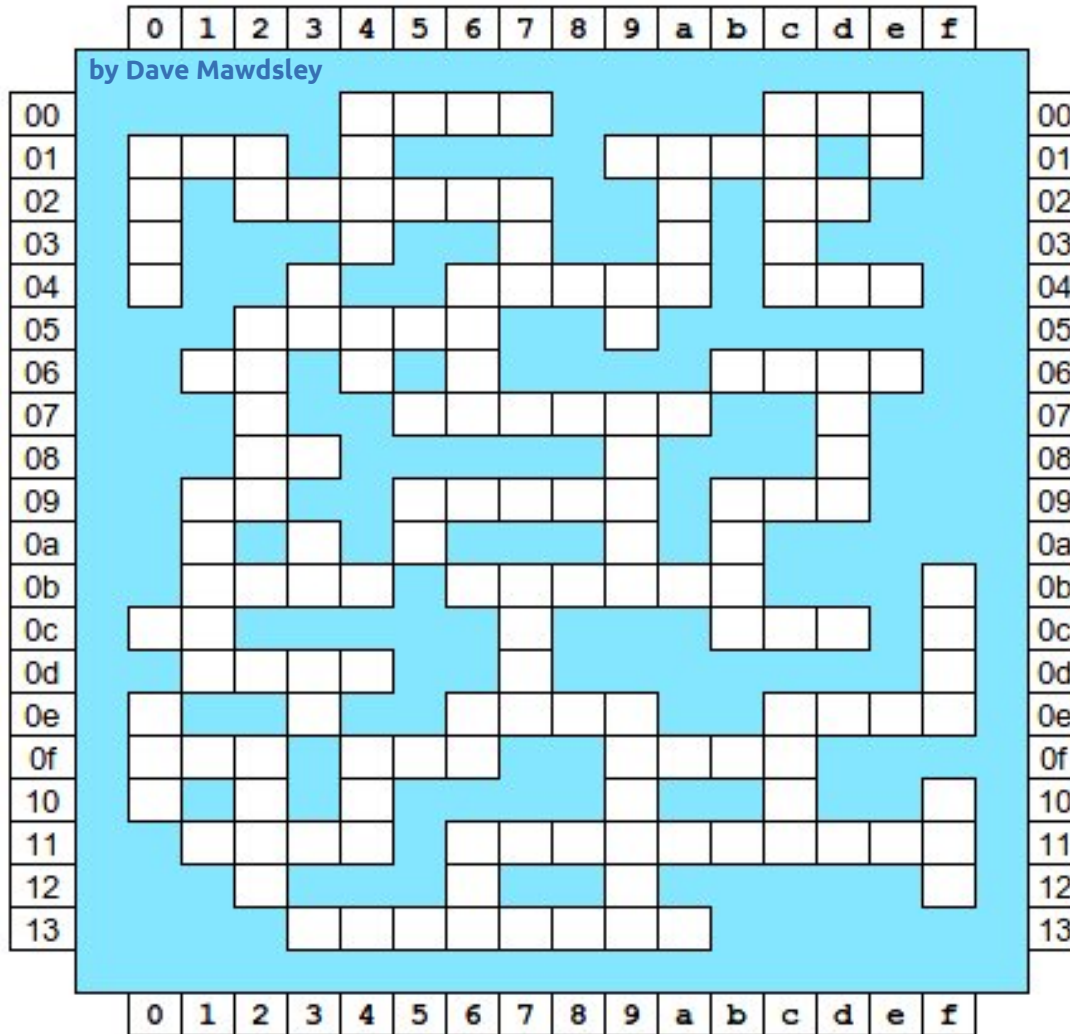
**Paddy Landau**



# PUZZLES

If you would like to submit a puzzle for publication, please email it to: [letters@fullcirclemagazine.org](mailto:letters@fullcirclemagazine.org). Solutions are on the second last page of this issue. No peeking!

## A Crossword Puzzle of Bash Commands

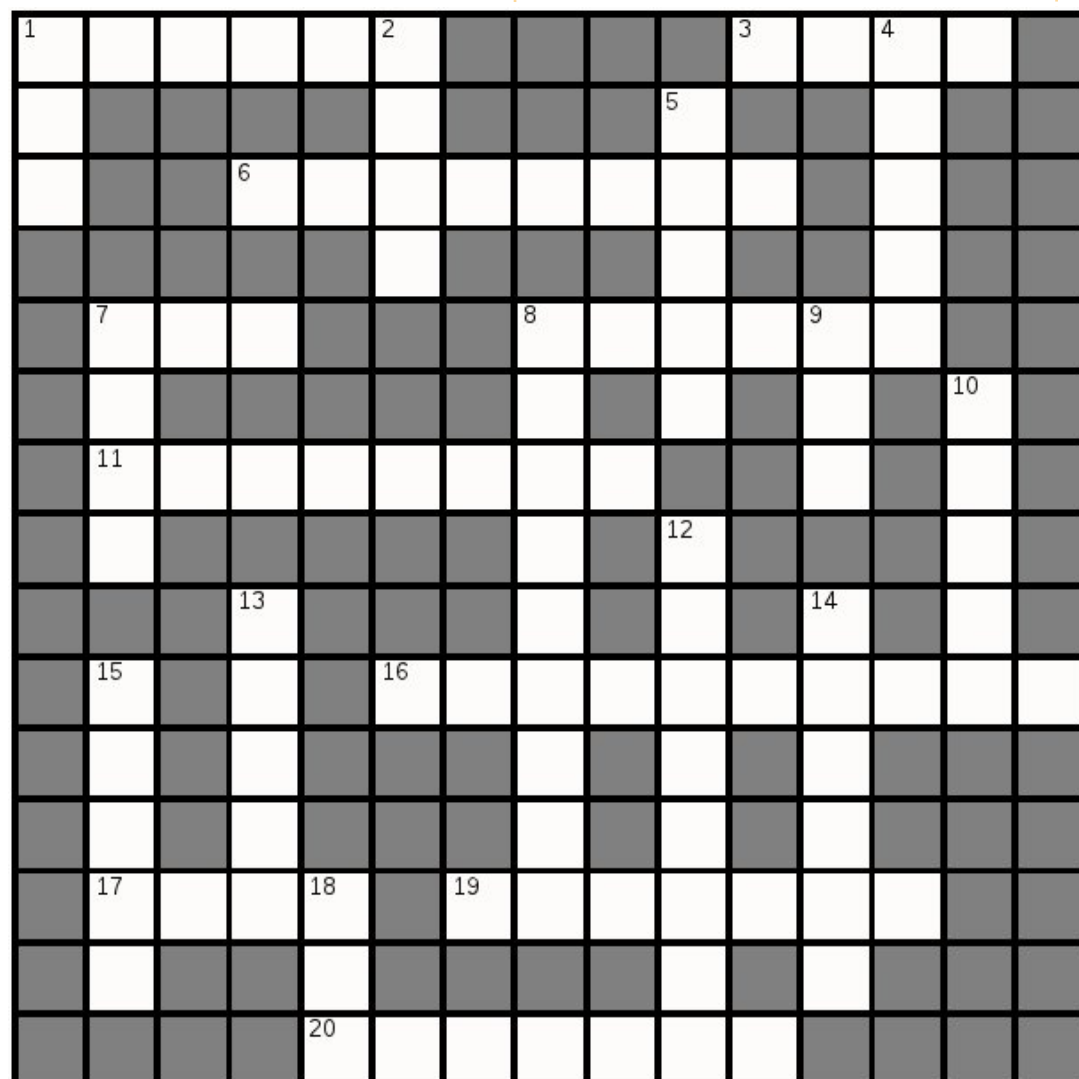


The solution to all the puzzles is on the second last page of this issue. **No peeking!**

	Clues Across		Clues Down
00 4	clear jobs	00 4	more or ...
00 c	enough ...	00 c	side-by-side matching
01 0	... and vigor	00 e	my file sizes
01 9	an antique ...	01 0	fancy directory list
02 2	virtual memory utility	01 2	live in a new town
02 c	username	01 a	network option
04 6	focus ...	02 7	... and also feather
04 c	transfer protocol	04 3	delete
05 2	trash folder	04 6	global / r e / print
06 1	What's happening now?	04 9	do underlining
06 b	... as a bird!	05 2	... or swim!
07 5	18-hr day and counting	05 4	mirror copy
08 2	object file symbols	06 d	repeat
09 1	Is my essay too long?	07 9	new folder
09 5	kernel modules	09 1	... way?
09 b	... where?	09 5	market ...
0b 1	Is that a fact?	09 b	retrieve url contents
0b 6	process branching	0a 3	Is my disk full?
0c 0	middle of the night	0b 7	geek self-defense
0c b	spinning ...	0b f	file compression
0d 1	pin...	0d 3	Who yu lookin ...?
0e 6	not your dot.com	0e 0	Not the F.C.C.
0e c	network explorer	0e 6	duplicate
0f 0	military rank	0e 9	Re-do arithmetic
0f 4	a study of two files	0e c	improved mess
0f 9	Sat. nite ...	0f 2	What files are open?
11 1	bubble ...	0f 4	purrfect pet
11 6	What's nearby?	10 f	... don't send the boy.
13 3	party sponsor	11 6	tennis challenge

## CRYPTIC CROSSWORD

by Ilavenil Thirumavalavan



The solution to all the puzzles is on the second last page of this issue. **No peeking!**

## Across

- 1 The center of the Linux OS (6)  
 3 Bootloader's food (4)  
 6 Precise scaly anteater which we'll get to see in April (8)  
 7 It's not UNIX! (3)  
 8/8D Lively rabbit with horns widely seen a couple of years back (6,9)  
 11/19 Intellectual Timon? (8,7)  
 16 Several universes? Just a repository (10)  
 17 Open source software is not free \_\_\_\_\_. (4)  
 19 See 11  
 20 A lightweight 3D design and animation tool (7)

## Down

- 1 If you don't like Gnome, you just might like this (3)  
 2 Cat-like, sharp-eyed, lucid! (4)  
 4 A desktop with integrity (5)  
 5 OS initiator and kernel developer in violin user? (5)  
 7 It's free, but it gives Photoshop a run for its money (4)  
 8 See 8 Across  
 9 Our own little penguin (3)  
 10 A Linux user isn't worried about it (5)  
 12 Repository of everything (8)  
 13 Garden ornament or desktop environment? (5)  
 14 The OS Ubuntu is based on (6)  
 15 Enhance multi-window management using this Japanese folding screen (5)  
 18 Use LEXAR to flip this (3)





# Q&A

Compiled by Gord Campbell

If you have Ubuntu-related questions, email them to: [questions@fullcirclemagazine.org](mailto:questions@fullcirclemagazine.org), and Gord will answer them in a future issue. Please include as much information as you can about your problem.

**Q** How can I customize Gnome Classic?

**A** There's a lengthy how-to here: <http://ubuntuforums.org/showthread.php?t=1886799>

**Q** I have a system based on the AMD Athlon Processor 2650e, and I installed the Nvidia graphic driver. When I start a second application, performance is terrible!

**A** Remove the Nvidia graphic driver. Another user with a similar problem discovered that Ubuntu automagically installed the older 173 nvidia drivers, and switching to a later driver caused very poor performance with multiple applications.

**Q** I have a .mkv file I needed to convert for an ipad. When I use default values with ffmpeg, it gives an error message.

**A** (Thanks to **andrew.46** in the Ubuntu Forums) Try this command:

```
ffmpeg -i /media/Warehouse/Movies/input.mkv -vcodec copy -acodec libfaac -ar 44100 -ab 128k ~/output.mp4
```

For this to succeed you will need to follow part C of FakeOutdoorsman's guide, to allow aac encoding with libfaac. This will set up ffmpeg with the required codecs. <http://ubuntuforums.org/showthread.php?t=1117283>

**Q** I'm trying to make a bootable USB with unetbootin, the USB has been formatted with NTFS as that is required. The problem is that the USB doesn't

show up in unetbootin (I can mount it and see it in fdisk).

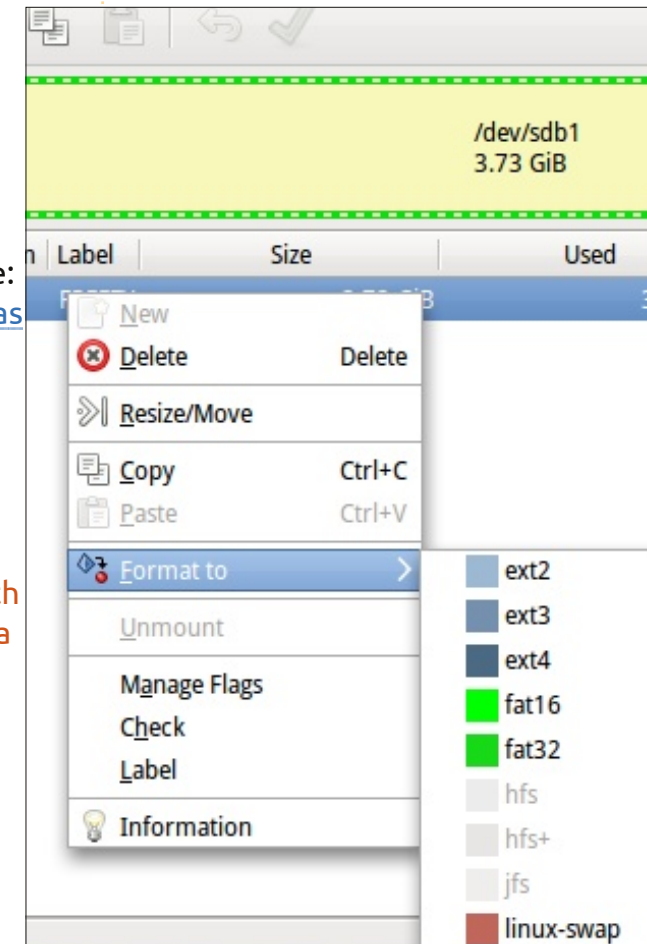
**A** From <http://unetbootin.sourceforge.net/> "If your USB drive doesn't show up, reformat it as FAT32." (see image)

**Q** What are some of the alternatives to Unity in Ubuntu 11.10?

**A** See this web page: <http://maketecheasier.com/5-alternatives-to-unity-in-ubuntu-oneiric/2011/10/27>

**Q** I'm using 11.10 with Unity. When I load a CD, its contents open in the file manager, and the CD also appears in the launcher. I want it to appear only in the launcher.

**A** Go to the top-right corner and click System Settings. Select "Removable Media." Check the box, "Never prompt or start programs on media insertion."



**Q** In Oneiric, I close the lid on my laptop, and it Suspends. I open it, and it asks for my password. I just want it to resume, without asking for my password.

**A** Run this command:

```
gsettings set
org.gnome.desktop.lockdown
disable-lock-screen 'true'
```

**Q** Any other suggestions for tweaking Oneiric?

**A** <http://www.webupd8.org/2011/10/things-to-tweak-after-installing-ubuntu.html>

**Q** I'm trying to connect to my headless server with SSH using "authorized keys," but it doesn't work, because my home folder is encrypted.

**A** This page describes a workaround:  
<https://help.ubuntu.com/community/SSH/OpenSSH/Keys#Troubleshooting>

**Q** In Ubuntu 11.04 or 11.10, the backlight doesn't come on, on my laptop. It has a Mobile Intel 4 Series Express Chipset Family graphics controller. An external monitor works fine.

**A** See this web page:  
<http://linux-on-acer-aspire-5732z.blogspot.com/2011/06/backlight-workaround-for-linux-mint-11.html>

**Q** I installed Ubuntu 11.10 in a dual-boot on a Thinkpad X120. The install went smoothly, but when I reboot, the system boots straight into Windows without a Grub menu.

**A** (Thanks to **substanceneil** in the Ubuntu Forums) Change

the bios to allow a non-EFI boot, and install again.

**Q** Is there any english-arabic and arabic-english dictionary?

**A** (Thanks to **yoramdavid** in the Ubuntu Forums) You can use GoldenDict with babylon.bgl files. (all free). Goldendict is in the repositories, and you can Google babylon.bgl.

**Q** How can I create a custom login screen for Ubuntu 11.10?

**A** To change the background:  
<http://www.omgubuntu.co.uk/2011/09/tool-change-lightdm-wallpaper-ubuntu-11-10/>

For an amusing, extreme example of changing the login screen:  
[http://www.youtube.com/watch?v=f8nm4NpaVXE&feature=player\\_em](http://www.youtube.com/watch?v=f8nm4NpaVXE&feature=player_em)

[bedded](#)

**Q** I'm trying to learn how to use a utility like scandisc, is there one I can download from the software center?

**A** The system will run this automatically about every 30 boots.

**Q** I replaced my ATI Radeon HD 4770 video card with an Nvidia GTX 560 Ti. When I boot Ubuntu 10.10 64-bit, it goes straight to a command line, with no GUI.

**A** (Thanks to **papibe** and **emilywind** in the Ubuntu Forums) First, rename the Xorg configuration file with this command:

```
sudo mv /etc/X11/xorg.conf
/etc/X11/xorg.conf.ATI
```

Then reboot, and you should have a GUI. Since your video card is so new, you will need to get a video driver from an unusual repository. Run this command:

```
sudo add-apt-repository
ppa:ubuntu-x-swat/x-updates
```

Then this one:

```
sudo apt-get update
```

Then you can search for nvidia-graphics-drivers. At the moment, the latest driver is version 285.05.09.

## Tips and Techniques

### A Retro Distro

Some people don't like the way Ubuntu's user interface has changed in recent versions, and a person from Rome, known as **lucazade** in the Ubuntu Forums, has done something about it.

The Italian has produced a distro called **FreezyLinux**. It's based on Ubuntu 11.10 and Gnome 3.2. As I am writing this, it's still classified as a beta. It's too big for a CD, but might fit on a 1 GB flash drive. All those things may change by the time you read this. The home page is:

<http://freezylinux.altervista.org/>

# FREEZY LINUX

What has lucazade produced? There's a single panel on the bottom of the screen, with hierarchical menus, just like Ubuntu had before Unity came into the picture. Windows have minimize, maximize and close buttons on the top-right. The distro includes Chromium as its web browser, Rhythmbox for playing music, Synaptic for installing programs, Dropbox for cloud storage and GIMP for editing images. Cheese webcam booth is included.

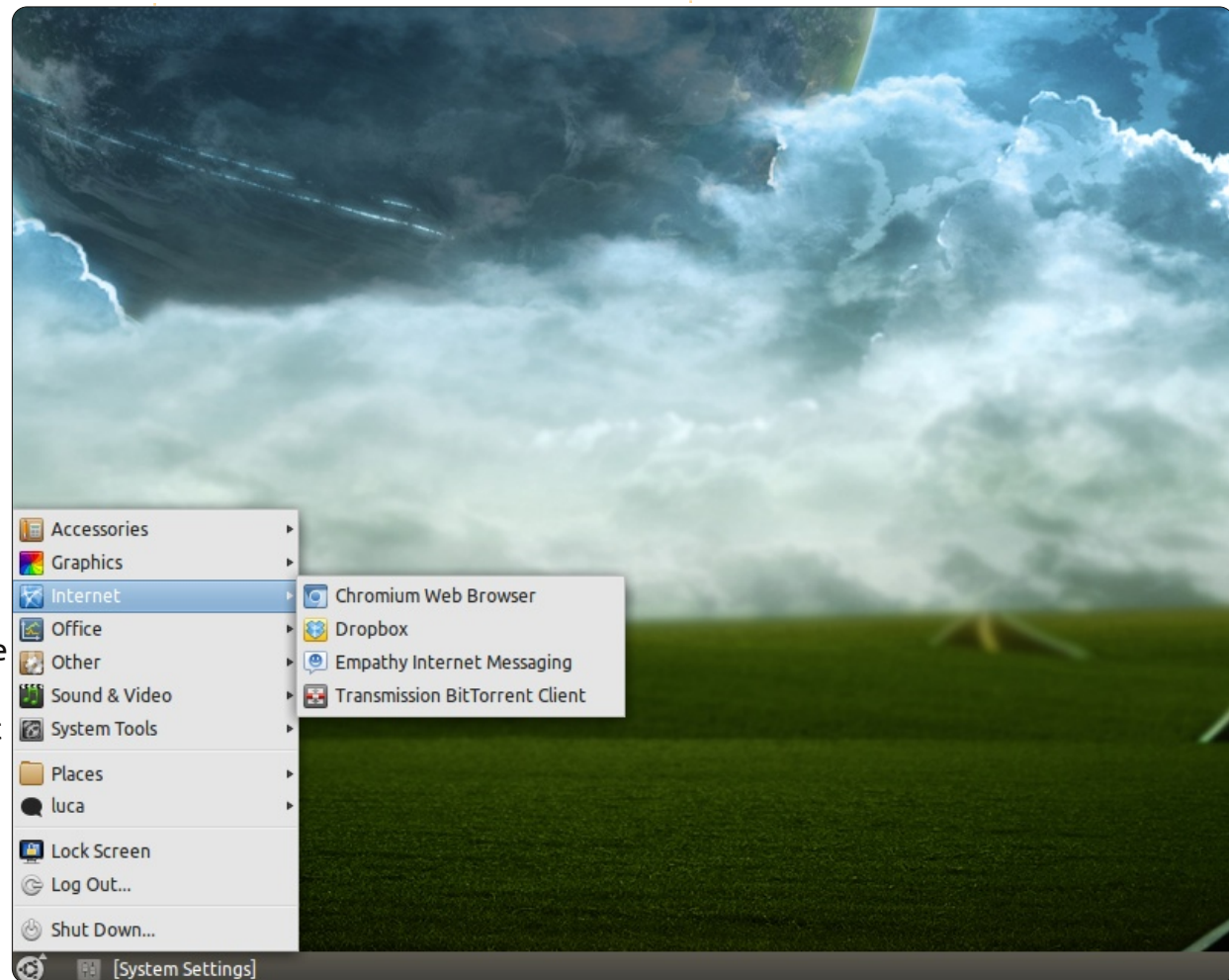
Upon loading, Freezy takes 370 MB less memory than Ubuntu 11.10 on my laptop. I have only run it from a persistent flash drive, but it seems to be pretty snappy.

The downsides? My laptop runs hotter than

normal under Freezy. This got a little better when I installed Fancontrol from the Ubuntu repositories, but it was still hot. The distro includes no games. I'm ever so slightly nervous about

running a distro which was produced by one person.

Even though Freezy *looks* like older versions of Ubuntu, it's based on the latest Gnome. That means it won't run those old applets, among other things. Still, if you want to go on a trip down memory lane, it's an option you can consider.





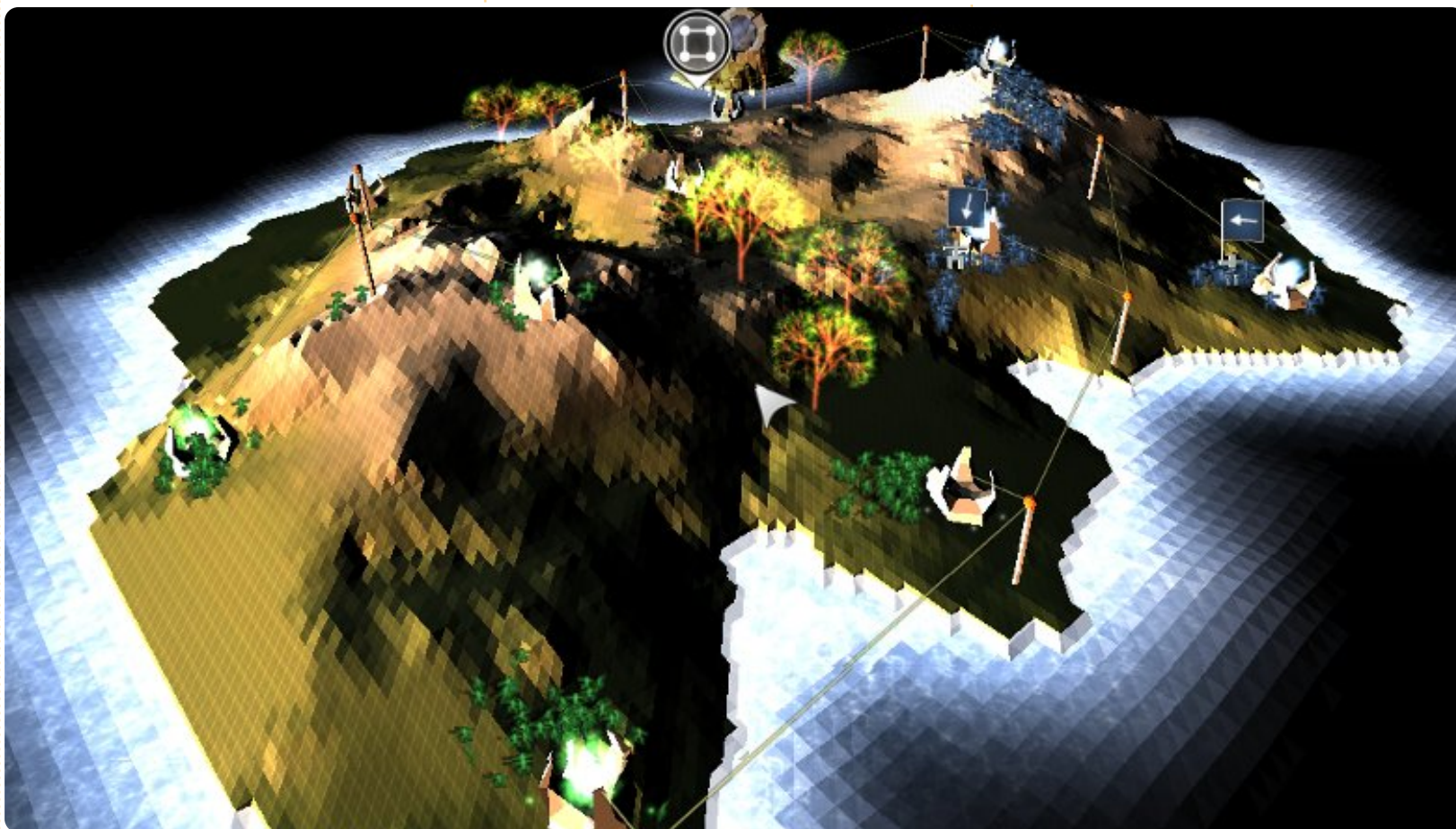


**H**i everybody! The game for review this month is Multiwinia (<http://goo.gl/yaV0B>), a real-time strategy experience by Introversion. Maybe you've heard about Darwinia (an RTS published back in 2005); this is the sequel, introducing new gaming ideas.

### Background Story & Gameplay

The world of Darwinia is a virtual theme park running inside a computer network. It was created by a computer genius called Dr. Sepulveda, who combined decades worth of genetic research to create sentient, evolving life forms: the Darwinians. In the original game, these little two-dimensional fellows are overrun by an evil computer virus, taking over the main systems and forcing Darwinians to face evident doom. With some help from Sepulveda, the viral infection is beaten and status quo ultimately restored.

However, as time flies, Darwinians evolve into more



independent and aggressive beings. They form tribes and begin to fight over the land's resources. In this new era, they're called Multiwinians, a far cry from the peaceful, law-abiding entities they once were. Great battles rage all

over Darwinia, consuming many digital lives and creating fear...

Still, Multiwinians cannot manage by themselves, and they need someone to guide their actions. In addition to simple annihilation, the game has

strategic battle modes such as Capture The Statue and Rocket Riot, in which you need to focus also on protecting your assets and planning some sort of a strategy for different phases of the game. I find this appealing since too many of today's RTS's simply feature the

# UBUNTU GAMES - MULTIWINIA

armament phase and the all-out attack, leaving little in between. Nevertheless, there could be some improvement, because many scenarios just end up in a huge demolition match, no matter what the actual mission is.

I very much liked the fact that Multiwinia is easy to dig into. Controls are standard, and there are two tutorials covering most of the essential feats. Anyways, the real trick is to be fast: scenarios usually last less than ten minutes,

and reinforcement troops need to be deployed at once when they are available. Battle efficiency can be enhanced by creating formations of troops led by officers, building gun turrets, using transportation vehicles, and taking advantage of powerful custom weaponry.

Since Multiwinia was originally released in 2008, the minimum requirements are not too bad: a 2.0 GHz processor, 512 MB RAM, 32 MB video card, and 60 MB of disk space. Yet, surprisingly, I

experienced a noticeable slow-down on my Ubuntu 11.10 laptop (2.7 GHz Core i7, Radeon 6470 1 GB, 4 GB DDR3, SSD), playing with the highest settings on an external 27" Full HD screen and 1080p resolution. With lower settings there was no problem.

## Conclusions

While Multiwinia is certainly noticeable among RTS games, and has a characteristic idea for gameplay, it loses much in its

repetitive nature. Participating in fierce, lightning-fast battles of hundreds of troops is cool, but, after a few days of intensive gaming, one likely loses interest. I had high hopes for the multiplayer, but the servers are not very active. Summing it up, Multiwinia is probably a good game when played once in a while, hacking through a couple of scenarios in a burst.

### Good:

- easy to learn; challenging to master; intuitive set of basic controls
- nice background story
- decent gameplay - even on a low-end machine

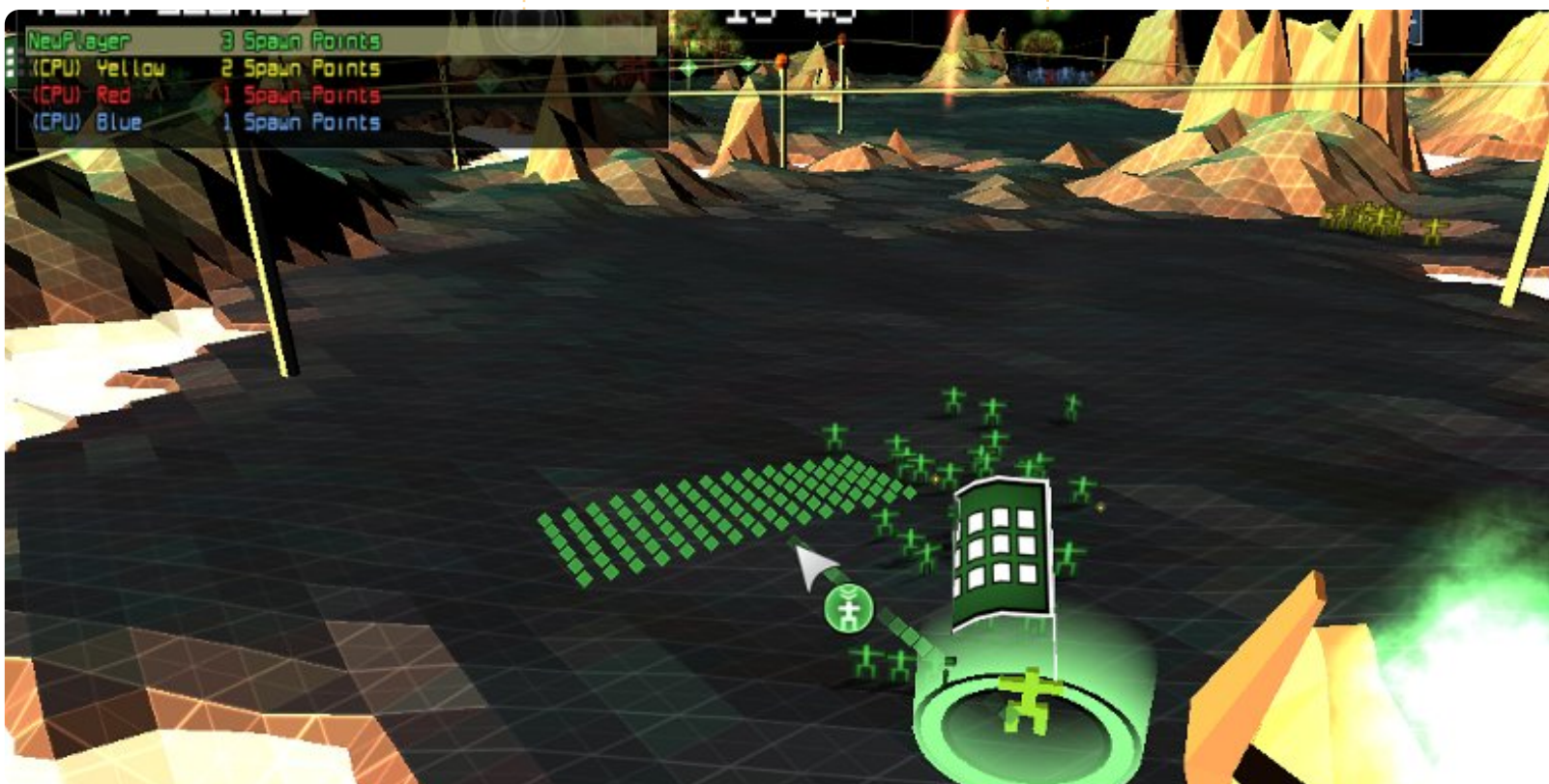
### Bad:

- repetitive nature of things regardless of the game mode
- inactive servers for multiplayer
- the tutorial is not as thorough as in Darwinia

**Points: 7 / 10**



**Riku Järvinen** (rierjarv) is a CS major student from Finland who delves into the Linux and Open Source gaming world once in a while.







# UBUNTU GAMES

Written by Jennifer Roger

## Bobby

**B**obby is a physics-based space adventure developed by Nooskewl Games. Your goal is to maneuver Bobby the Bullet throughout each level to knock the green balls into the red spiral. Once you eliminate all of the balls, the red portal turns green, inviting you to warp to the next zone. You are awarded stars after completing each level, and are graded on how quickly you complete them.

The controls are quite simple – change directions with the arrow keys, and propel Bobby using the space bar. Although the game

mechanics are simple, the real challenge lies in the precision and timing. One over-zealous push of the space bar will send him flying into the portal, thus restarting the level if the green balls aren't cleared yet!

Aesthetically, Bobby is fun and vivid with plenty of arcade nostalgia. The graphics are clear and smooth, and there were no noticeable glitches or frame rate issues when tested on Oneiric 11.10. The music and sound effects are also of good quality, and set the mood for a nice session of classic gaming. The premise is



simple – knock the green balls into the portal to advance to the next stage. But the simplicity of the game is what makes it so charming and addicting.

You can download a free demo from Nooskewl's website, or purchase all 75 levels at [https://www.nooskewl.com/buy\\_bobby.html](https://www.nooskewl.com/buy_bobby.html) for only \$0.99. Bobby is also available for purchase in the Ubuntu Software Center.

### Good:

- fun and addictive
- soundtrack

### Bad:

- can be frustrating
- some over-sensitive controls

**Score: 9/10**



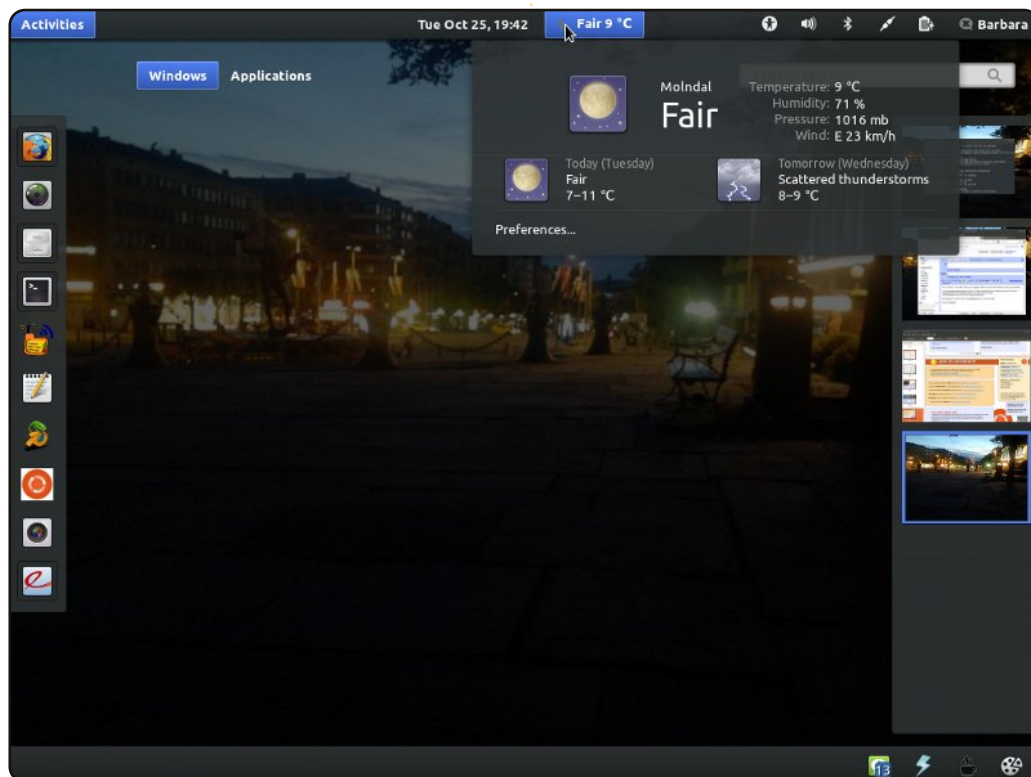
Jennifer Rogers .....





# MY DESKTOP

Your chance to show the world your desktop or PC. Email your screenshots and photos to: [misc@fullcirclemagazine.org](mailto:misc@fullcirclemagazine.org) and include a brief paragraph about your desktop, your PC's specs and any other interesting tidbits about your setup.



This is Ubuntu 11.10, 64-bit, running on my EeePC 1005PX with Intel Atom N450 @ 1.6GHz and 2GB RAM. I'm using Gnome-Shell instead of Unity. The theme Ambiance Blue is installed, and the icon theme is Faenza. Gnome Shell Weather Extension is installed as per the following guide, which is also the configuration tool for all of this desktop; [gnome-tweak-tools: http://www.webupd8.org/2011/10/install-gnome-shell-weather-extension.html#more](http://www.webupd8.org/2011/10/install-gnome-shell-weather-extension.html#more). My wallpaper is a photo I took from Gothenburg City on a summer night.

**Barbara Hohensee**



This is the desktop I currently have on the Linux Mint installation on my laptop. It's the standard desktop background, complete with several icons for the programs I use most. At the bottom you see Cairo dock with Mint-style icons, sorted in launchers, applets, and running applications.

My system is a Samsung R730 17.3" laptop with a P6100 Core 2 Duo CPU, 4GB RAM and 500GB hard disk. The monitor is 16:9 with 1600x900 pixels. It's simple but nice, just like me.

**DeMus**

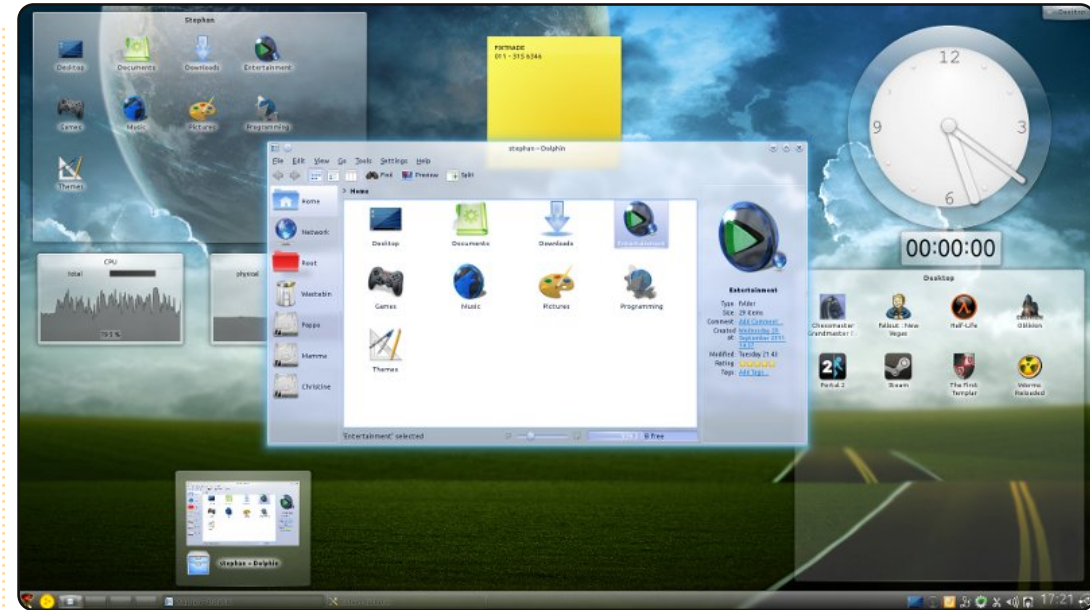


This is my desktop.

I am a student and also a novice to Ubuntu. My desktop looks so cool in a green and black combo. I am a Tamil. Our region always looks so cool with green paddies, so I choose this paddy wallpaper for my desk. I added some screenlets, and Cairo Dock increases the charm.

My cpu is a dual core @1.6 GHz, 1 GB RAM.

**Manimaran G**



My computer is an Intel Core i7 2600 (4 Cores) @ 3.4 GHz, and 4 GB of RAM. I'm running Kubuntu 11.10. The plasma theme is the default Air theme, and the colour scheme is "Penguin". What makes my desktop attractive (to me) is the widget style, Oxygen Transparent, configured with a hint of transparency.

Also of note is the fact that I've given all the folders in my Home directory custom icons. Most of them are from the Dark Glass Reworked Icon set. Despite being mostly for aesthetics, I find it surprisingly productive. It's easy to find my usual folders. And when I put something temporary in my Home Directory, the plain blue stands out, and I'm more inclined to work through the file/folder and delete it, or relocate to its permanent residence inside one of the other folders.

**Stephan Goosen**



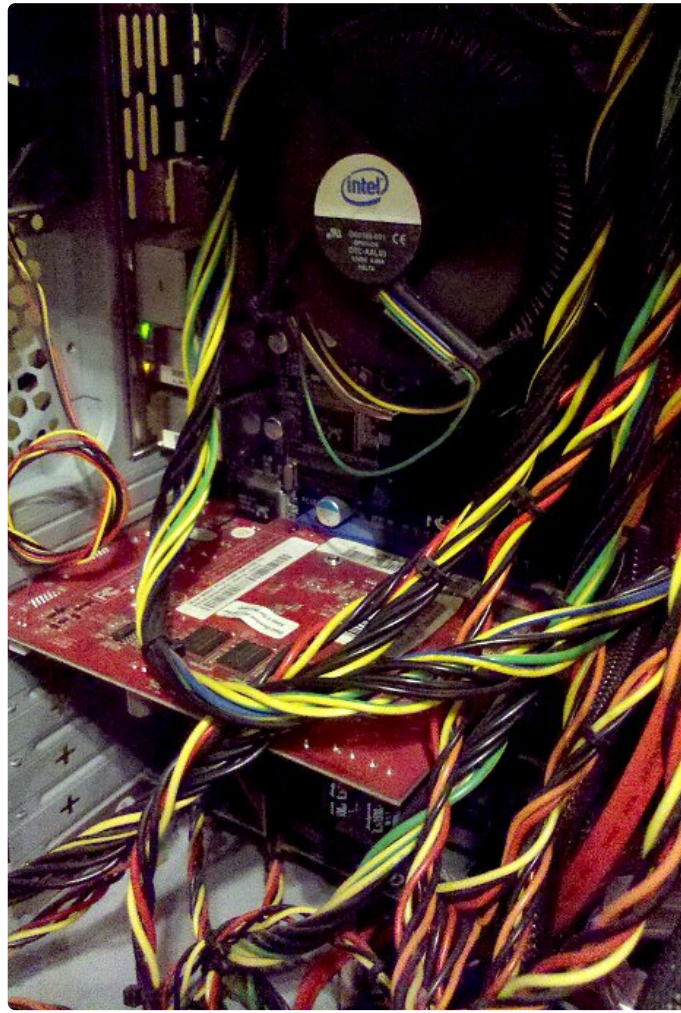


Inside this cheap Asus Vento A2 chassis is where the **Full Circle** magic happens.

Inside it beats an Intel Core 2 Quad CPU seated on an Abit IP35 Pro XE motherboard which has a total of 4GB of RAM. I have two old hard drives, a 55GB one which I rarely use, and the other is 114GB

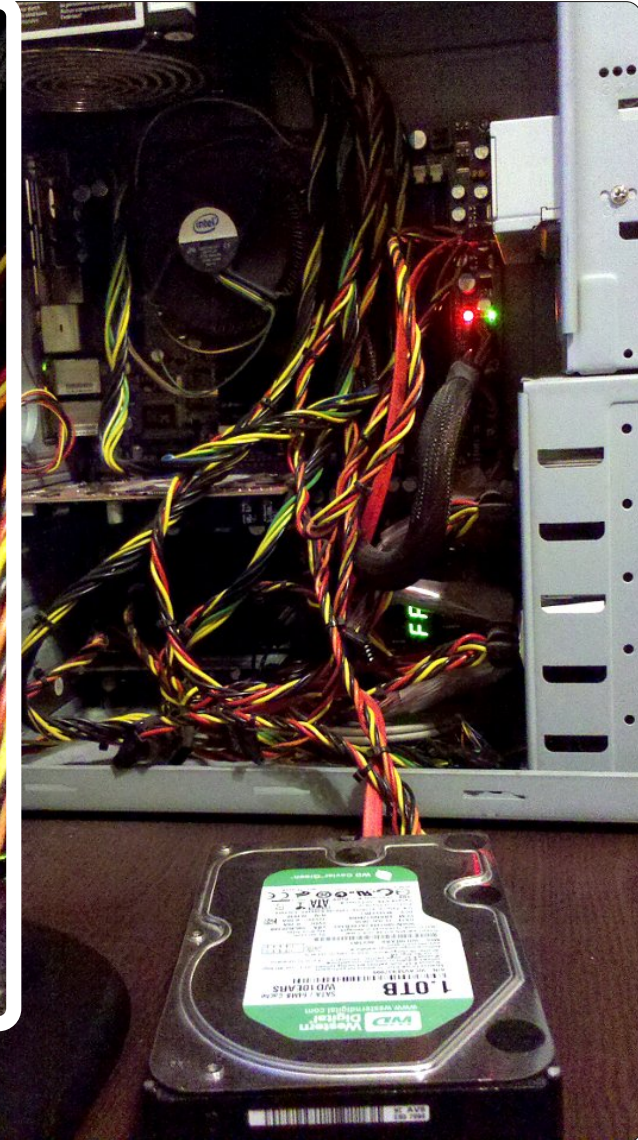
which I use for backups. My main hard drive, which sits on my desk, is 1TB. It holds the entire archive of FCM in both Scribus, and PDF, format. But, then again, so does the Ubuntu wiki.

Display is driven by an Nvidia GeForce 9400 GT. Out of the picture is my Netgear router which



gives me wireless Internet throughout the house, handy for all my other widgets and gadgets.

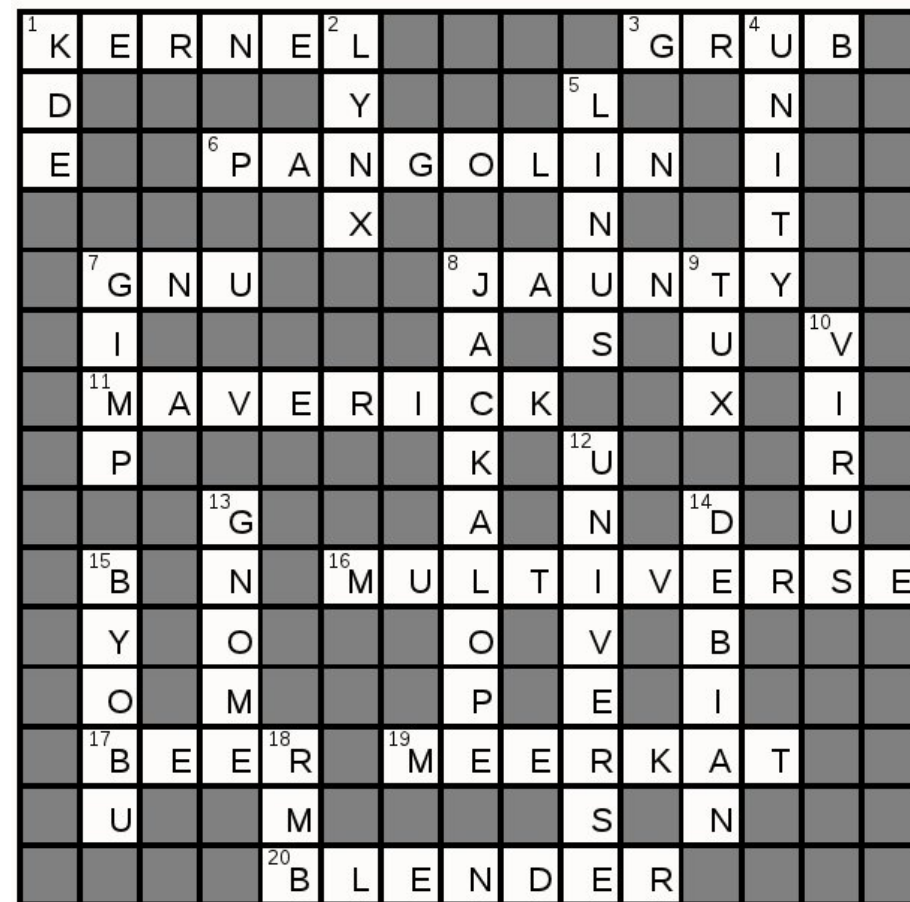
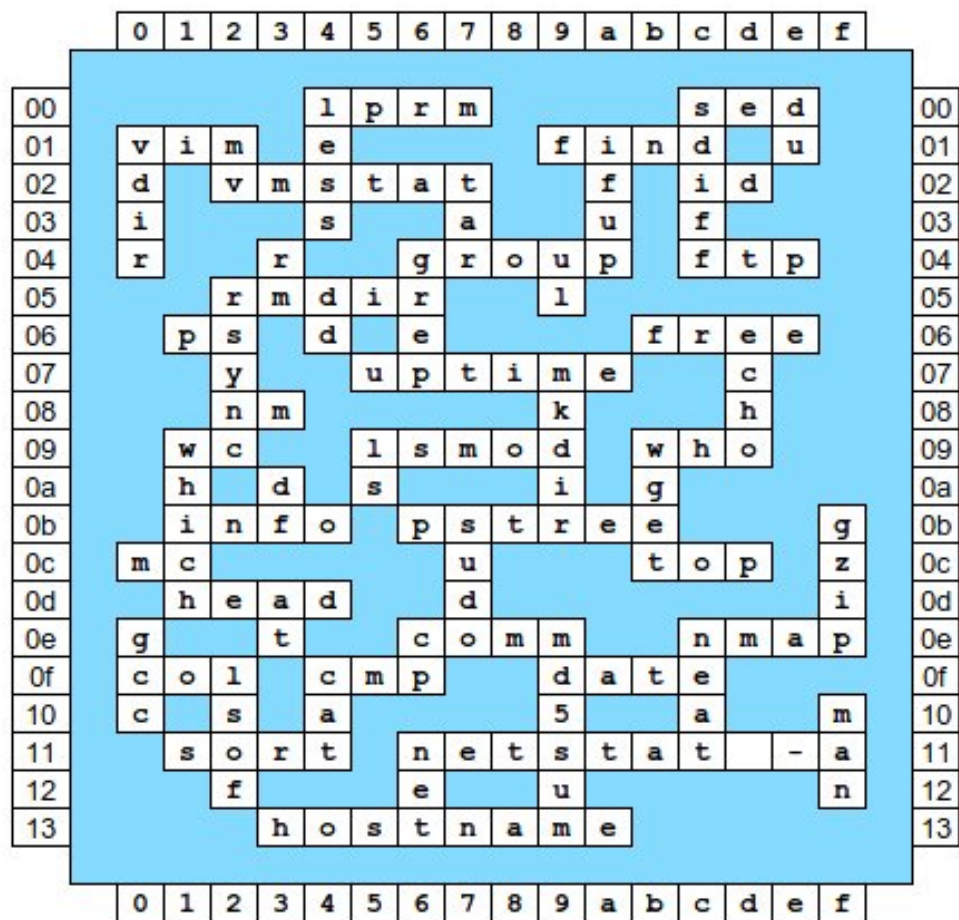
And yes, I do have a hard drive hanging out the side of my PC all the time.



Feel free to send in photos of your PC to [misc@fullcirclemagazine.org](mailto:misc@fullcirclemagazine.org).

Ronnie





## SUDOKU

EASY

5	8	1	2	4	6	9	3	7
9	4	3	7	5	8	2	6	1
7	2	6	9	1	3	8	4	5
4	6	9	5	3	1	7	8	2
8	3	2	4	7	9	5	1	6
1	7	5	6	8	2	4	9	3
6	5	8	3	2	4	1	7	9
2	9	4	1	6	7	3	5	8
3	1	7	8	9	5		2	4

HARD

1	9	3	4	2	7	6	8	5
4	5	6	8	3	9	1	2	7
8	2	7	6	5	1	3	4	9
3	7	5	9	8	4	2	6	1
6	1	2	5	7	3	8	9	4
9	4	8	1	6	2	5	7	3
5	6	9	7	1	8	4	3	2
7	3	1	2	4	6	9	5	8
2	8	4	3	9	5	7	1	6





# HOW TO CONTRIBUTE

We are always looking for new articles to include in Full Circle. For article guidelines, ideas, and for issue translation, please see our wiki:

<http://wiki.ubuntu.com/UbuntuMagazine>

Please email your articles to: [articles@fullcirclemagazine.org](mailto:articles@fullcirclemagazine.org)

If you would like to submit **news**, email it to: [news@fullcirclemagazine.org](mailto:news@fullcirclemagazine.org)

Send your **comments** or Linux experiences to: [letters@fullcirclemagazine.org](mailto:letters@fullcirclemagazine.org)

Hardware/software **reviews** should be sent to: [reviews@fullcirclemagazine.org](mailto:reviews@fullcirclemagazine.org)

**Questions** for Q&A should go to: [questions@fullcirclemagazine.org](mailto:questions@fullcirclemagazine.org)

**Desktop** screens should be emailed to: [misc@fullcirclemagazine.org](mailto:misc@fullcirclemagazine.org)

... or you can visit our **forum** via: [www.fullcirclemagazine.org](http://www.fullcirclemagazine.org)

## FULL CIRCLE NEEDS YOU!

A magazine isn't a magazine without articles and Full Circle is no exception. We need your Opinions, Desktops and Stories. We also need Reviews (games, apps & hardware), How-To articles (on any K/X/Ubuntu subject) and any questions, or suggestions, you may have.

Send them to: [articles@fullcirclemagazine.org](mailto:articles@fullcirclemagazine.org)

## Full Circle Team



**Editor** - Ronnie Tucker

[ronnie@fullcirclemagazine.org](mailto:ronnie@fullcirclemagazine.org)

**Webmaster** - Rob Kerfia

[admin@fullcirclemagazine.org](mailto:admin@fullcirclemagazine.org)

**Comms Mgr** - Robert Clipsham

[mrmonday@fullcirclemagazine.org](mailto:mrmonday@fullcirclemagazine.org)

**Podcast** - Robin Catling

[podcast@fullcirclemagazine.org](mailto:podcast@fullcirclemagazine.org)

## Editing & Proofreading

Mike Kennedy

Lucas Westermann

Gord Campbell

Our thanks go out to Canonical, the many translation teams around the world and to **Thorsten Wilms** for the current Full Circle logo.

**Deadline for Issue #57:**  
Sunday 08th Jan. 2012.

**Release date for issue #57:**  
Friday 27th Jan. 2012.

